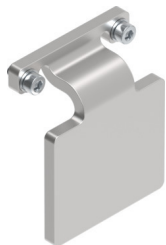


**Switch lug**  
**EAPM-L2-32-SLS**  
Part number: 8067259



**Data sheet**

Feature	Value
Size	32
Corrosion resistance class (CRC)	0 - No corrosion stress
LABS (PWIS) conformity	VDMA24364-B2-L
Suitability for the production of Li-ion batteries	Product corresponds to Festo's internal product definition for use in battery production:Metals with more than 1% by mass of copper, zinc or nickel are excluded from use.The exceptions are nickel in steel, chemically nickel-plated surfaces, circuit boards, cables, electrical plug connectors and coils
Cleanroom class	Statically installed element, no meaningful evaluation possible according to ISO 14644-1
Ambient temperature	-20 °C...80 °C
Product weight	10 g
Note on materials	RoHS-compliant