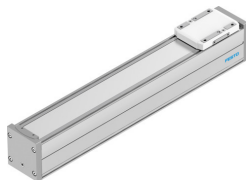


Electric linear actuator ELFC-KF-80-400

Part number: 8062827

FESTO



Data sheet

| Feature | Value |
|--|---|
| Working stroke | 400 mm |
| Size | 80 |
| Mounting position | Any |
| Guide | Recirculating ball bearing guide |
| Structural design | Guide |
| Position sensing | For proximity sensor For inductive proximity sensors |
| Max. acceleration | 15 m/s ² |
| Max. speed | 1.5 m/s |
| Duty cycle | 100% |
| Corrosion resistance class (CRC) | 0 - No corrosion stress |
| LABS (PWIS) conformity | VDMA24364 zone III |
| Suitability for the production of Li-ion batteries | Product corresponds to Festo's internal product definition for use in battery production: Metals with more than 1% by mass of copper, zinc or nickel are excluded from use. The exceptions are nickel in steel, chemically nickel-plated surfaces, circuit boards, cables, electrical plug connectors and coils |
| Cleanroom class | Class 7 according to ISO 14644-1 |
| Degree of protection | IP40 |
| Ambient temperature | 0 °C...50 °C |
| 2nd moment of area I _y | 1370000 mm ⁴ |
| 2nd moment of area I _z | 1660000 mm ⁴ |
| Max. force F _y | 5543 N |
| Max. force F _z | 5543 N |
| Max. torque M _x | 59.8 Nm |
| Max. torque M _y | 56.2 Nm |
| Max. torque M _z | 56.2 Nm |
| Max. force F _y total axis | 900 N |
| Max. force F _z total axis | 2700 N |
| Max. moment M _x total axis | 59.8 Nm |
| Max. moment M _y total axis | 56.2 Nm |
| Max. moment M _z total axis | 56.2 Nm |
| Torsion moment of inertia I _t | 90500 mm ⁴ |

| Feature | Value |
|--|--------------------------------------|
| Displacement force | 15 N |
| Reference service life | 5000 km |
| Maintenance interval | Life-time lubrication |
| Fy with theoretical service life of 100 km (from a guide perspective only) | 20400 N |
| Fz with theoretical service life of 100 km (from a guide perspective only) | 20400 N |
| Mx with theoretical service life of 100 km (from a guide perspective only) | 220 Nm |
| My with theoretical service life of 100 km (from a guide perspective only) | 207 Nm |
| Mz with theoretical service life of 100 km (from a guide perspective only) | 207 Nm |
| Moving mass | 815 g |
| Basic weight with 0 mm stroke | 1905 g |
| Additional weight per 10 mm stroke | 73 g |
| Dynamic deflection (load moved) | 0.05% of axis length, maximum 0.5 mm |
| Static deflection (load at standstill) | 0.1 % of axis length |
| Material of end caps | Die cast aluminum, painted |
| Profile material | Wrought aluminum alloy, anodized |
| Note on materials | RoHS-compliant |
| Cover strip material | High-alloy stainless steel |
| Slide carriage material | Steel |
| Guide rail material | Steel |
| Slide material | Die-cast aluminum |