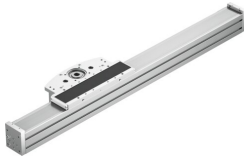


Cantilever linear actuator ELCC-TB-KF-90- -

Part number: 8060573

FESTO



Data sheet

Feature	Value
Drive pinion effective diameter	50.93 mm
Working stroke	50 mm...2000 mm
Size	90
Stroke reserve	0 mm...2000 mm
Toothed belt pitch	5 mm
Mounting position	Any
Guide	Recirculating ball bearing guide
Structural design	Electromechanical cantilever axis
Max. acceleration	30 m/s ²
Max. speed	5 m/s
Repetition accuracy	±0.05 mm
Corrosion resistance class (CRC)	0 - No corrosion stress
LABS (PWIS) conformity	VDMA24364 zone III
Degree of protection	IP20
Ambient temperature	-10 °C...60 °C
2nd moment of area Iy	2667900 mm ⁴
2nd moment of area Iz	2049490 mm ⁴
Max. driving torque	33 Nm
Max. force Fy	13957 N
Max. force Fz	13523 N
Max. torque Mx	167 Nm
Max. torque My	1300 Nm
Max. torque Mz	1233 Nm
Max. feed force Fx	1200 N
Mass moment of inertia JH per meter of stroke	62.9 kgcm ²
Mass moment of inertia JL per kg of payload	6.5 kgcm ²
Mass moment of inertia JO	55.2 kgcm ²
Feed constant	160 mm/U
Reference service life	5000 km
Lubrication interval, distance dependent	1000 km
Moved mass at 0 mm stroke with second drive head	9208 g

Feature	Value
Moving mass at 0 mm stroke	5487 g
Additional moving mass per 10 mm stroke	97 g
Additional slide weight	2997 g
Basic weight with 0 mm stroke	15713 g
Additional weight per 10 mm stroke	97 g
Basic weight at 0 mm stroke with second drive head	22431 g
Material of end caps	Wrought aluminum alloy, anodized
Profile material	Wrought aluminum alloy, anodized
Note on materials	RoHS-compliant
Drive head material	Wrought aluminum alloy, anodized
Guide rail material	Rolled steel, Corrotect coated
Housing material	High-alloy stainless steel
Slide material	Cast aluminum, anodized
Toothed belt clamping component material	Wrought aluminum alloy, anodized
Toothed belt material	Polychloroprene with glass cord and nylon coating Polyurethane with steel cord and textile coating Polyurethane with steel cord