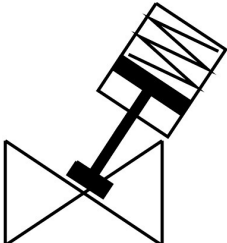


Angle seat valve

VZX-A-B-TS7-1 1/4"-M2-V14T-13.5-K-75-20-V4

Part number: 8060548

FESTO



Data sheet

| Feature | Value |
|------------------------|--|
| Structural design | Poppet valve with piston actuator |
| Actuation type | Pneumatic |
| Mounting position | Any |
| Type of mounting | Line installation |
| Cable connection | Threaded sleeve 1 1/4" as per ANSI/ASME B 1.20.1 |
| Valve function | 2/2 |
| Flow direction | Non-reversible Under valve seat, for gaseous and liquid media |
| Medium pressure | 0 MPa...1.35 MPa 0 bar...13.5 bar |
| Reset method | Mechanical spring |
| Type of control | Externally controlled |
| Pneumatic connection | Internal thread G1/8 |
| Operating pressure | 0.5 MPa...1 MPa 5 bar...10 bar 72.5 psi...145 psi |
| Medium | Vapor Hydraulic fluid based on mineral oil Inert gas Mineral oil Water Filtered compressed air, 200 µm filter mesh Neutral liquids |
| Control of the medium | On/off mode |
| Operating medium | Compressed air as per ISO 8573-1:2010 [7:4:4] |
| Max. viscosity | 600 mm²/s |
| Temperature of medium | -10 °C...180 °C |
| Ambient temperature | 0 °C...60 °C |
| Flow rate Kv | 30.3 m³/h |
| Use in exterior area | Weather-protected locations class C1 based on IEC 60654-1 |
| Note on materials | RoHS-compliant |
| LABS (PWIS) conformity | VDMA24364 zone III |

| Feature | Value |
|-------------------------------------|--|
| Valve housing material | Cast stainless steel |
| Material number, fitting housing | ASTM A351-CF3M |
| Seals material | FPM |
| Spindle seal material | PTFE |
| Seat seal material | PTFE |
| Product weight | 3930 g |
| Certification | CRN |
| Explosion prevention and protection | Zone 1 (ATEX) Zone 2 (ATEX) Zone 21 (ATEX) Zone 22 (ATEX) |
| Certificate issuing authority | German Technical Control Board (TÜV) 968/V 1039.01/20 |
| Safety integrity level (SIL) | SIL 2 |
| PFH | 1.36E-07 |
| PFD | 0.000595 |
| Actuator size | 75 mm |
| Stroke | 20 mm |
| Control function | Closed by spring force, NC |
| Position sensing | With mechanical indicator |
| Drive housing material | Cast stainless steel |
| Material number, drive housing | 1.4408 |
| Storage temperature | -10 °C...60 °C |
| Degree of protection | IP65 IP67 |
| Piston rod material | High-alloy stainless steel |
| Cover material | Cast stainless steel |