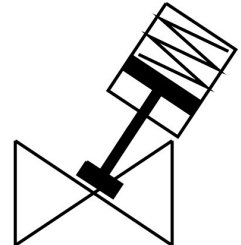


# Angle seat valve

## VZX A-B-TS7-1"-M2-V14T-8.3-K-46-17-V4

Part number: 8060544

FESTO



## Data sheet

| Feature                | Value  |
|------------------------|--|
| Structural design      | Poppet valve with piston actuator  |
| Actuation type         | Pneumatic  |
| Mounting position      | Any  |
| Type of mounting       | Line installation  |
| Cable connection       | Threaded sleeve 1 NPT as per ANSI/ASME B 1.20.1  |
| Valve function         | 2/2  |
| Flow direction         | Non-reversible<br>Under valve seat, for gaseous and liquid media   |
| Medium pressure        | 0 MPa...0.83 MPa<br>0 bar...8.3 bar  |
| Reset method           | Mechanical spring  |
| Type of control        | Externally controlled  |
| Pneumatic connection   | Internal thread G1/8   |
| Operating pressure     | 0.5 MPa...1 MPa<br>5 bar...10 bar<br>72.5 psi...145 psi  |
| Medium                 | Vapor<br>Hydraulic fluid based on mineral oil<br>Inert gas<br>Mineral oil<br>Water<br>Filtered compressed air, 200 µm filter mesh<br>Neutral liquids |
| Control of the medium  | On/off mode  |
| Operating medium       | Compressed air as per ISO 8573-1:2010 [7:4:4]  |
| Max. viscosity         | 600 mm²/s  |
| Temperature of medium  | -10 °C...180 °C  |
| Ambient temperature    | 0 °C...60 °C   |
| Flow rate Kv           | 20.3 m³/h  |
| Use in exterior area   | Weather-protected locations class C1 based on IEC 60654-1  |
| Note on materials      | RoHS-compliant   |
| LABS (PWIS) conformity | VDMA24364 zone III   |

| Feature                             | Value  |
|-------------------------------------|--|
| Valve housing material              | Cast stainless steel   |
| Material number, fitting housing    | ASTM A351-CF3M   |
| Seals material                      | FPM  |
| Spindle seal material               | PTFE   |
| Seat seal material                  | PTFE   |
| Product weight                      | 2150 g   |
| Certification                       | CRN  |
| Explosion prevention and protection | Zone 1 (ATEX)<br>Zone 2 (ATEX)<br>Zone 21 (ATEX)<br>Zone 22 (ATEX) |
| Certificate issuing authority       | German Technical Control Board (TÜV) 968/V 1039.01/20              |
| Safety integrity level (SIL)        | SIL 2  |
| PFH                                 | 1.36E-07   |
| PFD                                 | 0.000595   |
| Actuator size                       | 46 mm  |
| Stroke                              | 17 mm  |
| Control function                    | Closed by spring force, NC   |
| Position sensing                    | With mechanical indicator  |
| Drive housing material              | Cast stainless steel   |
| Material number, drive housing      | 1.4408   |
| Storage temperature                 | -10 °C...60 °C   |
| Degree of protection                | IP65<br>IP67   |
| Piston rod material                 | High-alloy stainless steel   |
| Cover material                      | Cast stainless steel   |