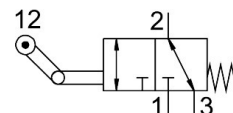


Roller lever valve VMEF-KT-M32-M-G18

Part number: 8049241

FESTO



Data sheet

Feature	Value
Valve function	3/2, monostable
Actuation type	Mechanical
Width	20 mm
Standard nominal flow rate	750 l/min
Pneumatic working port	G1/8
Operating pressure	-0.095 MPa...1 MPa -0.95 bar...10 bar
Structural design	One-way roller lever Plate seat
Reset method	Mechanical spring
Max. stroke limit (hard)	11 mm
Nominal width	5.6 mm
Application note	Risk of pinching
Sealing principle	Soft
Mounting position	Any
Type of control	Direct
Flow direction	Reversible
Lap	Zero overlap
Max. actuating speed with lateral actuation	0.7 m/s
Max. switching frequency	3 Hz
Cam angle	30 deg
Explosion prevention and protection	Zone 1 (ATEX) Zone 2 (ATEX) Zone 21 (ATEX) Zone 22 (ATEX)
Operating medium	Compressed air as per ISO 8573-1:2010 [7:-:-]
Information on operating and pilot media	Operation with oil lubrication possible (required for further use)
Corrosion resistance class (CRC)	1 - Low corrosion stress
LABS (PWIS) conformity	VDMA24364-B1/B2-L
Temperature of medium	-10 °C...60 °C
Ambient temperature	-10 °C...60 °C
Note on ambient temperature	Influence of heat on wear
Actuating force	32.7 N

Feature	Value
Product weight	227 g
Type of mounting	With through-hole
Pneumatic connection 1	G1/8
Pneumatic connection 2	G1/8
Pneumatic connection 3	G1/8
Note on materials	RoHS-compliant
Actuator attachments material	Steel, galvanized
Seals material	NBR
Housing material	Wrought aluminum alloy, anodized