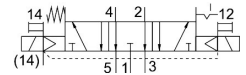
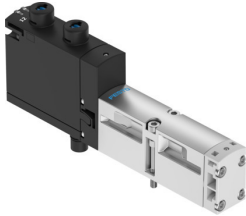


Air solenoid valve VSVA-B-P53ED-ZH-A2-1T1L

Part number: 8039182

FESTO



Data sheet

Feature	Value
Valve function	5/3, exhausted
Actuation type	Electrical
Width	18 mm
Standard nominal flow rate	380 l/min
Pneumatic working port	Sub-base, size 18 mm as per ISO 15407-1 G1/8
Operating voltage	24V DC
Operating pressure	-0.09 MPa...1 MPa -0.9 bar...10 bar
Structural design	Piston gate valve
Reset method	Mechanical spring Electrical actuation
Degree of protection	IP65 NEMA 4
Nominal width	5 mm
Exhaust air function	With flow control option Via throttle plate Via individual sub-base
Sealing principle	Soft
Mounting position	Any
Manual override	Non-detenting
Type of control	Pilot-controlled
Pilot air supply port	External
Flow direction	Non-reversible
Lap	Overlap
Signal status display	LED
Pilot pressure MPa	0.3 MPa...1 MPa
Pilot pressure	3 bar...10 bar
Flow rate of pneumatic valve on individual sub-base	390 l/min
Optimized flow rate of pneumatic valve, pneumatically concatenated flow	430 l/min
Optimized flow rate of pneumatic valve pneumatically concatenated flow	380 l/min
Asymmetrical switching time off	37 ms for control side 12

Feature	Value
Asymmetrical switching time on	10 ms for control side 14 13 ms for control side 12
Duty cycle	100%
Max. positive test pulse with 0 signal	1500 µs
Max. negative test pulse on 1 signal	800 µs
Nominal operating voltage DC	24 V
Coil characteristics	24 V DC: 1.6 W
Surge resistance	2.5 kV
Contamination level	3
Permissible voltage fluctuations	+/- 10 %
Operating medium	Compressed air as per ISO 8573-1:2010 [7:4:4]
Information on operating and pilot media	Operation with oil lubrication possible (required for further use)
Vibration resistance	Transport application test with severity level 2 as per FN 942017-4 and EN 60068-2-6
Shock resistance	Shock test with severity level 2 as per FN 942017-5 and EN 60068-2-27
Corrosion resistance class (CRC)	0 - No corrosion stress
LABS (PWIS) conformity	VDMA24364-B1/B2-L
Temperature of medium	-5 °C...50 °C
Relative air humidity	0 - 90 %
Noise level	85 dB(A)
Ambient temperature	-5 °C...50 °C
Max. tightening torque for valve mounting	0.8 Nm...1.2 Nm
Product weight	170 g
Electrical connection	4-pin Plug as per ISO 15407-2
Type of mounting	On sub-base
Pilot air port 12/14	Sub-base, size 18 mm as per ISO 15407-2
Pilot exhaust air port 82/84	Ducted Not ducted Optionally:
Pneumatic connection 1	Sub-base, size 18 mm as per ISO 15407-2
Pneumatic connection 2	Sub-base, size 18 mm as per ISO 15407-2
Pneumatic connection 3	Sub-base, size 18 mm as per ISO 15407-2
Pneumatic connection 4	Sub-base, size 18 mm as per ISO 15407-2
Pneumatic connection 5	Sub-base, size 18 mm as per ISO 15407-2
Note on materials	RoHS-compliant
Seals material	FPM NBR
Housing material	Die-cast aluminum PA
Material of screws	Steel, galvanized