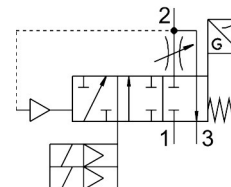


# Soft start/quick exhaust valve MS6-SV-1/2-D-10V24-2M8

Part number: 8038489

**FESTO**



## Data sheet

| Feature                              | Value  |
|--------------------------------------|--|
| Series                               | MS   |
| Size                                 | 6  |
| Width dimension                      | 62 mm  |
| Safety function                      | Exhausting<br>Prevention of unexpected start-up (pressurization)   |
| Safety integrity level (SIL)         | Exhaust/SIL 3<br>Avoidance of unexpected start-up (pressurization)/SIL 3   |
| Performance Level (PL)               | Exhaust/category 3, performance level d<br>Avoidance of unexpected start-up (pressurization)/category 3, performance level d |
| Note on forced dynamization          | Switching frequency at least once a month  |
| Structural design                    | Piston seat  |
| Lap                                  | Underlap   |
| Actuation type                       | Electrical   |
| Pilot air supply port                | Internal   |
| Sealing principle                    | Soft   |
| Exhaust air function                 | Without flow control option  |
| Position sensing principle           | Piston magnet principle  |
| Conforms to standard                 | DIN EN ISO 13849-1<br>DIN EN ISO 13849-2   |
| Manual override                      | None   |
| Reset method                         | Mechanical spring  |
| Type of control                      | Pilot-controlled   |
| Valve function                       | 3/2, closed, monostable<br>Pressure build-up function  |
| Operating pressure                   | 0.35 MPa...1 MPa<br>3.5 bar...10 bar   |
| C value                              | 19.3 l/sbar  |
| b-value                              | 0.21   |
| Standard nominal flow rate           | 4300 l/min   |
| Standard flow rate exhaust 6-> 0 bar | 9000 l/min   |
| Max. switching frequency             | 0.5 Hz   |
| Switching time off                   | 40 ms  |

| Feature                                      | Value  |
|--|--|
| On switching time                            | 130 ms   |
| Duty cycle                                   | 100%   |
| Signal status display                        | LED<br>Switching outputs   |
| Coil characteristics                         | 24 V DC: 1.8 W   |
| Nominal operating voltage DC                 | 24 V   |
| Permissible voltage fluctuations             | +10 %/-15 %  |
| Operating medium                             | Compressed air as per ISO 8573-1:2010 [7:4:4]  |
| Information on operating and pilot media     | Operation with oil lubrication possible (required for further use)                       |
| Corrosion resistance class (CRC)             | 2 - Moderate corrosion stress  |
| Note on materials                            | RoHS-compliant   |
| LABS (PWIS) conformity                       | VDMA24364-B1/B2-L  |
| Degree of protection                         | IP65<br>With plug socket   |
| Temperature of medium                        | -10 °C...50 °C   |
| Ambient temperature                          | -10 °C...50 °C   |
| Storage temperature                          | -10 °C...50 °C   |
| Shock resistance                             | Shock test with severity level 2 as per FN 942017-5 and EN 60068-2-27                    |
| Vibration resistance                         | Transport application test with severity level 2 as per FN 942017-4 and EN 60068-2-6     |
| Certification                                | RCM compliance mark  |
| KC characters                                | KC EMC   |
| CE marking (see declaration of conformity)   | As per EU EMC directive<br>as per EU machinery directive<br>As per EU RoHS directive     |
| UKCA marking (see declaration of conformity) | To UK instructions for EMC<br>To UK instructions for machines<br>To UK RoHS instructions |
| Type of mounting                             | Line installation<br>With accessories<br>Optionally:                                     |
| Mounting position                            | Any  |
| Product weight                               | 1900 g   |
| Pneumatic connection 1                       | G1/2   |
| Pneumatic connection 2                       | G1/2   |
| Pneumatic connection 3                       | G1   |
| Electrical connection                        | 2-pin<br>2x plugs<br>Form C<br>as per EN 175301-803                                      |
| Electrical connection, proximity sensor      | 2x cables with plugs<br>3-pin<br>M8<br>Rotatable thread                                  |
| Housing material                             | Die-cast aluminum  |
| Seals material                               | NBR  |
| Piston rod material                          | High-alloy stainless steel   |