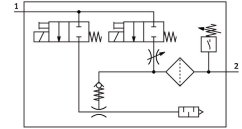


Vacuum generator OVEM-07-H-B-QO-CE-N-LK

Part number: 8037694

FESTO



Data sheet

Feature	Value
Nominal width of Laval nozzle	0.7 mm
Width dimension	20 mm
Muffler construction type	Open
Mounting position	Any
Ejector characteristics	High vacuum Standard
Grade of filtration	40 µm
Manual override	Non-detenting Additionally via operating buttons
Integrated function	Ejector pulse valve, electric Flow control Shut off valve, electric Compressed air filter Air saving function, electrical Non-return valve Pneumatic muffler open Vacuum switch
Structural design	Modular
Short-circuit protection	yes
Valve function	Closed
Reverse polarity protection	for all electrical connections
Switching input to standard	IEC 61131-2
Display type	4-character alphanumeric Back-lit LCD
Switching position indication	LCD
Operating pressure	2 bar...8 bar
Operating pressure for max. vacuum	4.1 bar
Max. vacuum	93 %
Nominal operating pressure	6 bar
Max. suction rate with respect to atmosphere	16 l/min
Air supply time at nominal operating pressure	0.4 s
DC operating voltage range	20.4 V...27.6 V
Duty cycle	100%
Max. output current	100 mA

Feature	Value
Residual current	0.1 mA
Coil characteristics	24 V DC: low-current phase 0.3 W, high-current phase 2.55 W
Overload protection	Available
Certification	RCM compliance mark c UL us - Listed (OL)
KC characters	KC EMC
CE marking (see declaration of conformity)	As per EU EMC directive
UKCA marking (see declaration of conformity)	To UK instructions for EMC
Operating medium	Compressed air as per ISO 8573-1:2010 [7:4:4]
Information on operating and pilot media	Operation with oil lubrication not possible
Corrosion resistance class (CRC)	2 - Moderate corrosion stress
LABS (PWIS) conformity	VDMA24364 zone III
Temperature of medium	0 °C...50 °C
Relative air humidity	5 - 85 %
Noise level at nominal operating pressure	58 dB(A)
Degree of protection	IP65
Ambient temperature	0 °C...50 °C
Max. tightening torque	0.8 Nm with internal thread 2.5 Nm with through-hole
Product weight	330 g
Pressure measuring range	-1 bar...0 bar
Protocol	IO-Link®
IO-Link®, protocol version	Device V 1.1
IO-Link®, profile	Smart sensor profile
IO-Link®, function classes	Binary data channel (BDC) Process data variable (PDV) Identification Diagnostics Teach channel
IO-Link®, communication mode	COM2 (38,4 kBd)
IO-Link®, port class	A
IO-Link®, process data width OUT	1 Byte
IO-Link®, process data content OUT	1 bit (ejector pulse ON/OFF) 1 bit (vacuum ON/OFF)
IO-Link®, process data width IN	2 Byte
IO-Link®, process data content IN	14 bit PDV (pressure measurement) 2 bit BDC (pressure monitoring)
IO-Link®, minimum cycle time	3.5 ms
IO-Link®, data memory required	0.5 KB
IO-Link®, device ID	0x00003E
Electrical connection	5-pin M12x1 Plug
Type of mounting	With through-hole With internal thread With accessories
Pneumatic connection 1	QS-8
Pneumatic connection 3	QS-8
Vacuum connection	QS-8
Note on materials	RoHS-compliant
Seals material	NBR
Female nozzle material	POM
Compressed air filter material	Fabric PA Sintered steel
Housing material	Die-cast aluminum PA-reinforced

Feature	Value
Material of adjusting screw	Steel
Muffler material	Wrought aluminum alloy PU foam
Material of screws	Steel
Material of plug housing	Brass, nickel-plated
Material of pins	Steel
Material of jet nozzle	Wrought aluminum alloy
Material of pneumatic fitting	Brass, nickel-plated