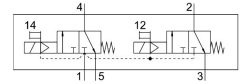


Air solenoid valve VUVS-LT30-T32C-MD-G38-F8

Part number: 8036700

FESTO



Data sheet

Feature	Value
Valve function	2x3/2, closed, monostable
Actuation type	Electrical
Valve size	31 mm
Standard nominal flow rate	1600 l/min
Pneumatic working port	G3/8
Operating voltage	Via solenoid coil, to be ordered separately
Operating pressure	0.25 MPa...1 MPa 2.5 bar...10 bar
Structural design	Plate seat
Reset method	Mechanical spring
Certification	c UL us - Recognized (OL)
Nominal width	7.9 mm
Exhaust air function	With flow control option
Sealing principle	Soft
Mounting position	Any
Manual override	Detenting Non-detenting
Type of control	Pilot-controlled
Pilot air supply port	Internal
Flow direction	Non-reversible
Lap	Underlap
b-value	0.4
C value	6 l/sbar
Switching time off	33 ms
On switching time	13 ms
Max. positive test pulse with 0 signal	2000 µs
Max. negative test pulse on 1 signal	3600 µs
Coil characteristics	See solenoid coil, to be ordered separately
Operating medium	Compressed air as per ISO 8573-1:2010 [7:4:4]
Information on operating and pilot media	Operation with oil lubrication possible (required for further use)
Vibration resistance	Transport application test with severity level 2 as per FN 942017-4 and EN 60068-2-6

Feature	Value
Shock resistance	Shock test with severity level 2 as per FN 942017-5 and EN 60068-2-27
Corrosion resistance class (CRC)	2 - Moderate corrosion stress
LABS (PWIS) conformity	VDMA24364-B1/B2-L
Cleanroom class	Class 6 according to ISO 14644-1
Temperature of medium	-10 °C...60 °C
Pilot medium	Compressed air as per ISO 8573-1:2010 [7:4:4]
Ambient temperature	-10 °C...60 °C
Product weight	442 g
Type of mounting	On terminal strip With through-hole Optionally:
Venting hole connection	Not ducted
Pilot exhaust air port 82	M5
Pilot exhaust air port 84	M5
Pneumatic connection 1	G3/8
Pneumatic connection 2	G3/8
Pneumatic connection 3	G3/8
Pneumatic connection 4	G3/8
Pneumatic connection 5	G3/8
Note on materials	RoHS-compliant
Seals material	HNBR NBR TPE-U(PU)
Housing material	Die cast aluminum, painted
Piston slide material	Wrought aluminum alloy
Material of screws	Steel, galvanized