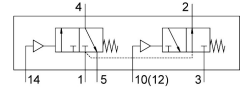


Pneumatic valve VUWS-LT25-T32H-M-G14

Part number: 8035215

FESTO



Data sheet

| Feature | Value |
|--|--|
| Valve function | 2x3/2, open/closed, monostable |
| Actuation type | Pneumatic |
| Valve size | 26.5 mm |
| Standard nominal flow rate | 1000 l/min |
| Pneumatic working port | G1/4 |
| Operating pressure | -0.09 MPa...1 MPa -0.9 bar...10 bar |
| Structural design | Plate seat |
| Reset method | Mechanical spring |
| Certification | c UL us - Recognized (OL) |
| Nominal width | 6.9 mm |
| Exhaust air function | With flow control option |
| Sealing principle | Soft |
| Mounting position | Any |
| Manual override | None |
| Type of control | Direct |
| Pilot air supply port | Internal |
| Flow direction | Non-reversible |
| Lap | Underlap |
| Pilot pressure MPa | 0.25 MPa...1 MPa |
| Pilot pressure | 2.5 bar...10 bar |
| Switching time off | 30 ms |
| On switching time | 7 ms |
| Explosion prevention and protection | Observe the information on the certificate Zone 1 (ATEX) Zone 2 (ATEX) Zone 21 (ATEX) Zone 22 (ATEX) |
| Operating medium | Compressed air as per ISO 8573-1:2010 [7:4:4] |
| Information on operating and pilot media | Operation with oil lubrication possible (required for further use) |
| Vibration resistance | Transport application test with severity level 2 as per FN 942017-4 and EN 60068-2-6 |
| Shock resistance | Shock test with severity level 2 as per FN 942017-5 and EN 60068-2-27 |

| Feature | Value |
|----------------------------------|---|
| Corrosion resistance class (CRC) | 2 - Moderate corrosion stress |
| LABS (PWIS) conformity | VDMA24364-B1/B2-L |
| Cleanroom class | Class 6 according to ISO 14644-1 |
| Temperature of medium | -5 °C...60 °C |
| Pilot medium | Compressed air as per ISO 8573-1:2010 [7:4:4] |
| Ambient temperature | -5 °C...60 °C |
| Product weight | 377 g |
| Type of mounting | On terminal strip With through-hole Optionally: |
| Venting hole connection | Not ducted |
| Pilot air port 10 | M5 |
| Pilot air port 14 | M5 |
| Pneumatic connection 1 | G1/4 |
| Pneumatic connection 2 | G¼ |
| Pneumatic connection 3 | G1/4 |
| Pneumatic connection 4 | G1/4 |
| Pneumatic connection 5 | G1/4 |
| Note on materials | RoHS-compliant |
| Seals material | HNBR NBR TPE-U(PU) |
| Housing material | Die-cast aluminum Painted |
| Material of screws | Steel, galvanized |