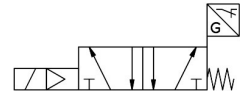
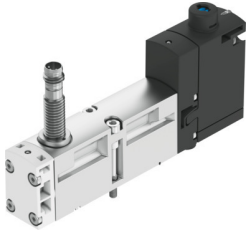


Air solenoid valve VSVA-B-M52-MZ-A2-1T1L-APP

Part number: 8033496

FESTO



Data sheet

| Feature | Value |
|--|---|
| Valve function | 5/2, monostable |
| Actuation type | Electrical |
| Width | 18 mm |
| Standard nominal flow rate | 550 l/min |
| Pneumatic working port | Sub-base, size 18 mm according to ISO 15407-2 G1/8 |
| Operating pressure | -0.09 MPa...1 MPa -0.9 bar...10 bar |
| Structural design | Piston gate valve |
| Reset method | Mechanical spring |
| KC characters | KC EMC |
| CE marking (see declaration of conformity) | As per EU EMC directive |
| Degree of protection | IP65 NEMA 4 |
| Nominal width | 5 mm |
| Exhaust air function | With flow control option Via throttle plate Via individual sub-base |
| Sealing principle | Soft |
| Mounting position | Any |
| Manual override | Covered |
| Type of control | Pilot-controlled |
| Pilot air supply port | External |
| Flow direction | Non-reversible |
| Measuring principle | Inductive |
| Lap | Overlap |
| Sensor reverse polarity protection | For all electrical connections |
| Signal status display | LED |
| Switching position sensing | Normal position with sensor |
| Sensor switching status indication | LED |
| Pilot pressure MPa | 0.3 MPa...1 MPa |
| Pilot pressure | 3 bar...10 bar |
| Flow rate of pneumatic valve | 750 l/min |

| Feature | Value |
|---|--|
| Flow rate of pneumatic valve on individual sub-base | 600 l/min |
| Optimized flow rate of pneumatic valve, pneumatically concatenated flow | 700 l/min |
| Optimized flow rate of pneumatic valve pneumatically concatenated flow | 550 l/min |
| Switching time off | 38 ms |
| On switching time | 12 ms |
| Pneumatic valve - sensor ON switching time | 32 ms |
| Pneumatic valve - sensor switching time off | 9 ms |
| Duty cycle | 100% |
| Max. positive test pulse with 0 signal | 1500 µs |
| Max. negative test pulse on 1 signal | 800 µs |
| Nominal operating voltage DC | 24 V |
| Switching output | PNP |
| Coil characteristics | 24 V DC: 1.6 W |
| Surge resistance | 2.5 kV |
| Contamination level | 3 |
| Permissible voltage fluctuations | +/- 10 % |
| Operating medium | Compressed air as per ISO 8573-1:2010 [7:4:4] |
| Information on operating and pilot media | Operation with oil lubrication possible (required for further use) |
| Vibration resistance | Transport application test with severity level 2 as per FN 942017-4 and EN 60068-2-6 |
| Shock resistance | Shock test with severity level 2 as per FN 942017-5 and EN 60068-2-27 |
| Corrosion resistance class (CRC) | 0 - No corrosion stress |
| LABS (PWIS) conformity | VDMA24364-B1/B2-L |
| Temperature of medium | -5 °C...50 °C |
| Relative air humidity | 0 - 90 % |
| Noise level | 85 dB(A) |
| Ambient temperature | -5 °C...50 °C |
| Max. tightening torque for valve mounting | 0.8 Nm...1.2 Nm |
| Product weight | 140 g |
| DC sensor operating voltage range | 10 V...30 V |
| Sensor short circuit protection | Pulsed |
| Sensor idle current | 10 mA |
| Max. output current, sensor | 200 mA |
| Sensor max. switching frequency | 5000 Hz |
| Sensor residual ripple | ± 10 % |
| Sensor voltage drop | 2 V |
| Electrical connection | 4-pin Plug as per ISO 15407-2 |
| Sensor connection | Plug 3-pin M8x1 |
| Type of mounting | On sub-base |
| Pilot air port 12/14 | Sub-base, size 18 mm as per ISO 15407-2 |
| Pilot exhaust air port 82/84 | Ducted Not ducted Optionally: |
| Pneumatic connection 1 | Sub-base, size 18 mm as per ISO 15407-2 |
| Pneumatic connection 2 | Sub-base, size 18 mm as per ISO 15407-2 |
| Pneumatic connection 3 | Sub-base, size 18 mm as per ISO 15407-2 |
| Pneumatic connection 4 | Sub-base, size 18 mm as per ISO 15407-2 |
| Pneumatic connection 5 | Sub-base, size 18 mm as per ISO 15407-2 |
| Note on materials | RoHS-compliant |

| Feature | Value |
|----------------------------|-------------------------|
| Seals material | FPM NBR |
| Housing material | Die-cast aluminum PA |
| Material of screws | Steel, galvanized |
| Switching element function | N/C contact |