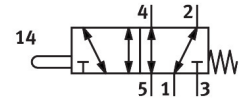
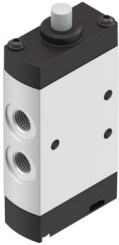


Stem actuated valve VMEF-S-M52-M-G18

Part number: 8031297

FESTO



Data sheet

| Feature | Value |
|--|--|
| Valve function | 5/2, monostable |
| Actuation type | Mechanical |
| Width | 20 mm |
| Standard nominal flow rate | 750 l/min |
| Pneumatic working port | G1/8 |
| Operating pressure | -0.095 MPa...1 MPa -0.95 bar...10 bar |
| Structural design | Piston gate valve |
| Reset method | Mechanical spring |
| Nominal width | 5.2 mm |
| Application note | Do not use as mechanical stop |
| Sealing principle | Soft |
| Mounting position | Any |
| Type of control | Direct |
| Flow direction | Reversible |
| Lap | Overlap |
| Max. switching frequency | 3 Hz |
| Explosion prevention and protection | Zone 1 (ATEX) Zone 2 (ATEX) Zone 21 (ATEX) Zone 22 (ATEX) |
| Operating medium | Compressed air as per ISO 8573-1:2010 [7:-:-] |
| Information on operating and pilot media | Operation with oil lubrication possible (required for further use) |
| Corrosion resistance class (CRC) | 2 - Moderate corrosion stress |
| LABS (PWIS) conformity | VDMA24364-B1/B2-L |
| Temperature of medium | -10 °C...60 °C |
| Ambient temperature | -10 °C...60 °C |
| Actuating force | 34 N |
| Product weight | 145 g |
| Type of mounting | With through-hole |
| Pneumatic connection 1 | G1/8 |
| Pneumatic connection 2 | G1/8 |

| Feature | Value |
|------------------------|----------------------------------|
| Pneumatic connection 3 | G1/8 |
| Pneumatic connection 4 | G1/8 |
| Pneumatic connection 5 | G1/8 |
| Note on materials | RoHS-compliant |
| Cover material | PA-reinforced |
| Seals material | NBR |
| Housing material | Wrought aluminum alloy, anodized |