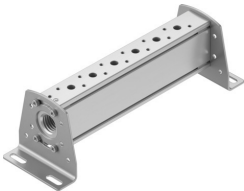


Common supply manifold VABM-B10-25-N12-6-P53

Part number: 8026232



Data sheet

Feature	Value
Width dimension	27.5 mm
Mounting position	Any
Max. no. of valve positions	6
Corrosion resistance class (CRC)	2 - Moderate corrosion stress
LABS (PWIS) conformity	VDMA24364-B1/B2-L
Product weight	586 g
Type of mounting	With mounting bracket
Pneumatic connection 1	1/2 NPT
Note on materials	RoHS-compliant
Manifold rail material	Wrought aluminum alloy