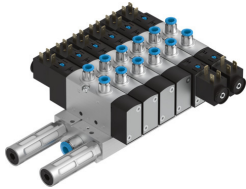


Manifold assembly VTUS-25

Part number: 8022016

FESTO



Data sheet

Feature	Value
Electrical actuation	Individual connection
Electrical I/O system	no
Width dimension	27.5 mm
Operating medium	Compressed air as per ISO 8573-1:2010 [7:4:4]
Ambient temperature	-10 °C...50 °C
Storage temperature	-20 °C...60 °C
Degree of protection	IP65 IP67 With plug socket as per IEC 60529
Corrosion resistance class (CRC)	2 - Moderate corrosion stress
Operating pressure	-0.09 MPa...1 MPa -0.9 bar...10 bar
Operating pressure for valve manifold with internal pilot air supply	1.5 bar...10 bar
LABS (PWIS) conformity	VDMA24364-B1/B2-L
Cleanroom class	Class 6 according to ISO 14644-1
CE marking (see declaration of conformity)	as per EU explosion protection directive (ATEX)
UKCA marking (see declaration of conformity)	acc. to UK EX instructions
Certification	c UL us - Recognized (OL)
Explosion prevention and protection	Zone 2 (ATEX) Zone 2 (UKEX) Zone 22 (ATEX) Zone 22 (UKEX)
ATEX category gas	II 3G
ATEX category for dust	II 3D
Explosion protection certification outside the EU	EPL Dc (GB) EPL Gc (GB)
Type of ignition protection for gas	Ex ec IIC T4 X Gc
Type of (ignition) protection for dust	Ex tc IIIC T115°C Dc X
Explosive ambient temperature	-10°C ≤ Ta ≤ +50°C
Note on materials	RoHS-compliant
Valve manifold design	Fixed grid
Max. no. of valve positions	16
Max. no. of pressure zones	9

Feature	Value
Valve function	2x3/2, closed, monostable 2x3/2, open, monostable 2x3/2, open/closed, monostable 3/2, closed, monostable 3/2, open, monostable 5/2, bistable 5/2, monostable 5/3, pressurized 5/3, exhausted 5/3, closed
Structural design	Piston gate valve Plate seat
Sealing principle	Soft
Valve size	26.5 mm
Standard nominal flow rate	1000 l/min...1300 l/min
Exhaust air function	With flow control option
Pneumatic working port	G1/4 1/4 NPT QS-6 QS-8 QS-10 QS-1/4 QS-5/16 QS-3/8