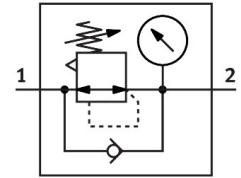


# Pressure regulator LR-1/2-D-7-MAXI-MPA

Part number: 8002371

**FESTO**



## Data sheet

Feature	Value
Size	Maxi
Series	D
Actuator lock	Rotary knob with detent
Mounting position	Any
Structural design	Pilot-controlled piston control valve
Controller function	Outlet pressure constant With secondary exhausting
Pressure gauge	with pressure gauge
Operating pressure	0 MPa...1.6 MPa 0 bar...16 bar
Pressure regulation range	0.5 bar...7 bar
Max. pressure hysteresis	0.04 MPa 0.4 bar 5.8 psi
Standard nominal flow rate	10700 l/min
Operating medium	Compressed air as per ISO 8573-1:2010 [7:4:4] Inert gas
Information on operating and pilot media	Operation with oil lubrication possible (required for further use)
Corrosion resistance class (CRC)	2 - Moderate corrosion stress
LABS (PWIS) conformity	VDMA24364-B1/B2-L
Air quality class at the output	Compressed air as per ISO 8573-1:2010 [7:4:4] Inert gas
Temperature of medium	-10 °C...60 °C
Ambient temperature	-10 °C...60 °C
Product weight	1200 g
Type of mounting	Front panel mounting Line installation With accessories
Pneumatic connection 1	G1/2
Pneumatic connection 2	G1/2
Note on materials	RoHS-compliant
Material of sub-base	Die-cast zinc
Seals material	NBR

Feature	Value
Housing material	Die-cast zinc