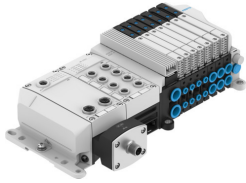


Valve terminal VTUX-A-P-APA-

Part number: 8000810

FESTO



Data sheet

Feature	Value
Width dimension	10.55 mm...12.55 mm
Type of mounting	Tie rod
Operating medium	Compressed air as per ISO 8573-1:2010 [7:4:4]
Pilot medium	Compressed air as per ISO 8573-1:2010 [7:4:4]
Ambient temperature	-5 °C...50 °C
Storage temperature	-20 °C...70 °C
Max. installation height	3500 m
Degree of protection	IP40 IP65
Corrosion resistance class (CRC)	1 - Low corrosion stress
Vibration resistance	Transport application test with severity level 1 as per FN 942017-4 and EN 60068-2-6
Shock resistance	Shock test with severity level 1 as per FN 942017-5 and EN 60068-2-27
Continuous shock resistance to DIN/IEC 68 Part 2-82	Tested as per severity level 1
Operating pressure	-0.1 MPa...0.7 MPa -1 bar...7 bar
Pilot pressure MPa	0.15 MPa...0.7 MPa
Pilot pressure	1.5 bar...7 bar
Operating pressure for valve manifold with internal pilot air supply	1.5 bar...7 bar
LABS (PWIS) conformity	VDMA24364-C1-L
CE marking (see declaration of conformity)	As per EU EMC directive As per EU RoHS directive
Certification	RCM compliance mark c UL us - Listed (OL)
Note on materials	RoHS-compliant
Valve manifold design	Modular and expandable
Max. no. of valve positions	32
Max. no. of pressure zones	16
Actuation type	Electrical
Valve function	2x3/2, closed, monostable 2x3/2, open, monostable 5/2, bistable 5/2, monostable 5/3, closed

Feature	Value
Structural design	Piston gate valve
Sealing principle	Soft
Type of control	Pilot-controlled
Pilot air supply port	External Internal
Nominal flow rate standardized according to ISO 8778	470 l/min...690 l/min
Suitability for vacuum	yes
Exhaust air function	With flow control option
Pneumatic connection 1	QS-8 QS-10 QS-12 QS-5/16 QS-3/8 For 15 mm cartridge Blanking plug
Pneumatic connection 2	QS-4 QS-6 QS-8 QS-5/32 QS-1/8 QS-1/4 QS-5/16 for 10 mm cartridge For 12 mm cartridge Blanking plug
Pneumatic connection 3	QS-8 QS-10 QS-12 QS-5/16 QS-3/8 for 15 mm cartridge Pneumatic muffler Blanking plug
Pneumatic connection 4	QS-4 QS-6 QS-8 QS-5/32 QS-1/8 QS-1/4 QS-5/16 For 10 mm cartridge For 12 mm cartridge Blanking plug
Pneumatic connection 5	QS-8 QS-10 QS-12 QS-5/16 QS-3/8 Silencer For 15 mm cartridge Blanking plug
Pilot air port 12/14	Blanking plug QS-4 QS-6 QS-8 QS-5/16 QS-1/4 for 12 mm cartridge
Pilot exhaust air port 82/84	QS-4 QS-6 QS-8 QS-5/16 QS-1/4 Silencer for 12 mm cartridge
Nominal operating voltage DC	24 V
Permissible voltage fluctuations	+/- 10 %