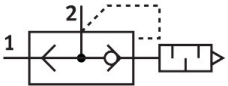


Quick exhaust valve SEU-1/4

Part number: 6753

FESTO



Data sheet

Feature	Value
Valve function	Quick exhaust
Selection of additional function	with muffler
Pneumatic connection 1	G1/4
Pneumatic connection 2	G3/4
Type of mounting	Screw-in
Standard nominal flow rate exhaust air 6->5 bar	1100 l/min
Standard flow rate exhaust 6-> 0 bar	2300 l/min
Standard nominal flow rate pressurization 6->5 bar	960 l/min
Operating pressure	0.5 bar...10 bar
Ambient temperature	-20 °C...75 °C
Housing material	Die-cast zinc
Operating medium	Compressed air as per ISO 8573-1:2010 [7:::]
Nominal width	7 mm
Mounting position	Any
Information on operating and pilot media	Operation with oil lubrication possible (required for further use)
LABS (PWIS) conformity	VDMA24364-B1/B2-L
Temperature of medium	-20 °C...75 °C
Noise level	95 dB(A)
Product weight	120 g
Seals material	NBR