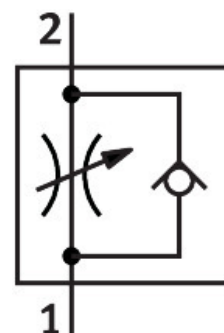


One-way flow control valve GR-3/8-B

Part number: 6308

FESTO



Data sheet

Feature	Value
Valve function	Flow control non-return function
Pneumatic connection 1	Internal thread G3/8
Pneumatic connection 2	Internal thread G3/8
Adjusting element	Knurled screw
Type of mounting	Front panel mounting With through-hole Optionally:
Standard nominal flow rate in flow control direction	1010 l/min
Standard nominal flow rate in non-return direction	1150 l/min
Operating pressure	0.01 MPa...1 MPa 0.1 bar...10 bar 1.45 psi...145 psi
Ambient temperature	-20 °C...75 °C
Housing material	Die-cast zinc
Explosion prevention and protection	Observe the information on the certificate Zone 1 (ATEX) Zone 2 (ATEX) Zone 21 (ATEX) Zone 22 (ATEX)
Mounting position	Any
Operating medium	Compressed air as per ISO 8573-1:2010 [7:4:4]
Information on operating and pilot media	Operation with oil lubrication possible (required for further use)
LABS (PWIS) conformity	VDMA24364-B1/B2-L
Temperature of medium	-20 °C...75 °C
Product weight	225 g
Note on materials	RoHS-compliant
Material of adjusting screw	Brass