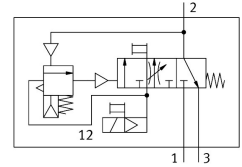


# Soft start/quick exhaust valve MS6-SV-1/2-C-10V24P

Part number: 589250

**FESTO**



## Data sheet

Feature	Value
Series	MS
Size	6
Width dimension	62 mm
Safety function	Exhausting Prevention of unexpected start-up (pressurization)
Performance Level (PL)	Exhaust/category 1, performance level c Avoidance of unexpected start-up (pressurization)/category 1, performance level c
Note on forced dynamization	Switching frequency at least once a month
Structural design	Piston gate valve
Lap	Overlap
Actuation type	Electrical
Pilot air supply port	Internal
Sealing principle	Soft
Exhaust air function	Without flow control option
Manual override	At pilot control air solenoid valve: non-detenting, detenting, at soft start/quick exhaust valve: detenting, self-resetting
Reset method	Mechanical spring
Type of control	Pilot-controlled
Valve function	3/2, closed, monostable Pressure build-up function
Operating pressure	0.3 MPa...1 MPa 3 bar...10 bar
C value	23.2 l/sbar
b-value	0.4
Standard nominal flow rate	5700 l/min
Standard flow rate exhaust 6-> 0 bar	7600 l/min
Switching time off	65 ms
On switching time	370 ms
Duty cycle	100%
Coil characteristics	24 V DC: 1.8 W
Permissible voltage fluctuations	+/- 10 %
Operating medium	Compressed air as per ISO 8573-1:2010 [7:4:4]

Feature	Value
Information on operating and pilot media	Operation with oil lubrication possible (required for further use)
Corrosion resistance class (CRC)	2 - Moderate corrosion stress
Note on materials	RoHS-compliant
LABS (PWIS) conformity	VDMA24364-B1/B2-L
Degree of protection	IP65 With plug socket
Temperature of medium	0 °C...60 °C
Ambient temperature	0 °C...60 °C
Storage temperature	-10 °C...60 °C
Shock resistance	Shock test with severity level 2 as per FN 942017-5 and EN 60068-2-27
Vibration resistance	Transport application test with severity level 2 as per FN 942017-4 and EN 60068-2-6
CE marking (see declaration of conformity)	As per EU EMC directive as per EU machinery directive As per EU RoHS directive
UKCA marking (see declaration of conformity)	To UK instructions for EMC To UK instructions for machines To UK RoHS instructions
For use in the food industry	See supplementary material information
Type of mounting	Line installation With accessories Optionally:
Mounting position	Any
Product weight	886 g
Pneumatic connection 1	G1/2
Pneumatic connection 2	G1/2
Pneumatic connection 3	G3/4
Electrical connection	4-pin as per IEC 61076-2-101
Housing material	Die-cast aluminum
Seals material	NBR
Piston rod material	High-alloy stainless steel