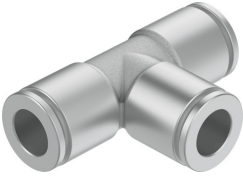


# Push-in T-connector NPQH-T-Q6-Q4-P10

Part number: 578386

**FESTO**



## Data sheet

Feature	Value
Size	Standard
Nominal width	3 mm
Tubing insertion depth	13 mm...15.8 mm
Note on the tubing insertion depth	Ø4 depth 13 mm Ø6 depth 15.8 mm
Mounting position	Any
Design	T-shape
Pack size	10
Structural design	Push-pull principle
Operating pressure for entire temperature range	-0.095 MPa...2 MPa -0.95 bar...20 bar -13.775 psi...290 psi
Information on operating pressure	Water: max. 0.6 MPa at 0 - 50 °C
Certificate issuing authority	NSF C0523185
Operating medium	Compressed air as per ISO 8573-1:2010 [7:::] Water (liquid, ice-free)
Information on operating and pilot media	Operation with oil lubrication possible
Corrosion resistance class (CRC)	3 - High corrosion stress
LABS (PWIS) conformity	VDMA24364-B1/B2-L
Cleanroom class	Class 4 according to ISO 14644-1
For use in the food industry	See declaration of conformity NSF/ANSI 169
Ambient temperature	0 °C...150 °C
Product weight	20.9 g
Pneumatic connection 1	For pneumatic tubing outside diameter 6 mm
Pneumatic connection 2	for pneumatic tubing outside diameter 4 mm
Note on materials	RoHS-compliant
Housing material	Brass, chemically nickel-plated
Guard ring material	PEI
Releasing ring material	Brass, chemically nickel-plated
Material of tubing seal	FPM
Material of tube retaining claw	High-alloy stainless steel
Thrust ring material	PEI

