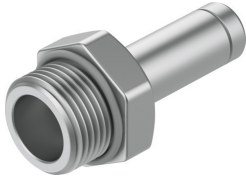


Push-in fitting
NPQH-D-G14-S12-P10
 Part number: 578366

FESTO



Data sheet

Feature	Value
Size	Standard
Nominal width	8.5 mm
Type of seal on screwed plug	Sealing ring
Mounting position	Any
Design	Straight design
Pack size	10
Structural design	Push-pull principle
Operating pressure for entire temperature range	-0.095 MPa...2 MPa -0.95 bar...20 bar -13.775 psi...290 psi
Information on operating pressure	Water: max. 0.6 MPa at 0 - 50 °C
Certificate issuing authority	NSF C0523185
Operating medium	Compressed air as per ISO 8573-1:2010 [7:-:-] Water (liquid, ice-free)
Information on operating and pilot media	Operation with oil lubrication possible
Corrosion resistance class (CRC)	3 - High corrosion stress
LABS (PWIS) conformity	VDMA24364-B1/B2-L
Cleanroom class	Statically installed element, no meaningful evaluation possible according to ISO 14644-1
For use in the food industry	See declaration of conformity NSF/ANSI 169
Ambient temperature	0 °C...150 °C
Nominal tightening torque	7.5 Nm
Tolerance for nominal tightening torque	± 20%
Product weight	22.2 g
Type of mounting	External hexagon, AF 16
Pneumatic connection 1	External thread G1/4
Pneumatic connection 2	Push-in sleeve Ø 12 mm
Note on materials	RoHS-compliant
Housing material	Brass, chemically nickel-plated
Material of threaded seal	FPM