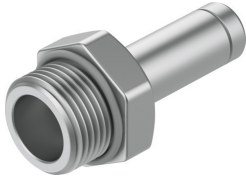


Push-in fitting
NPQH-D-G14-S10-P10
 Part number: 578365

FESTO



Data sheet

Feature	Value
Size	Standard
Nominal width	8 mm
Type of seal on screwed plug	Sealing ring
Mounting position	Any
Design	Straight design
Pack size	10
Structural design	Push-pull principle
Operating pressure for entire temperature range	-0.095 MPa...2 MPa -0.95 bar...20 bar -13.775 psi...290 psi
Information on operating pressure	Water: max. 0.6 MPa at 0 - 50 °C
Certificate issuing authority	NSF C0523185
Operating medium	Compressed air as per ISO 8573-1:2010 [7:-:-] Water (liquid, ice-free)
Information on operating and pilot media	Operation with oil lubrication possible
Corrosion resistance class (CRC)	3 - High corrosion stress
LABS (PWIS) conformity	VDMA24364-B1/B2-L
Cleanroom class	Statically installed element, no meaningful evaluation possible according to ISO 14644-1
For use in the food industry	See declaration of conformity NSF/ANSI 169
Ambient temperature	0 °C...150 °C
Nominal tightening torque	7.5 Nm
Tolerance for nominal tightening torque	± 20%
Product weight	15.8 g
Type of mounting	External hexagon, AF 16
Pneumatic connection 1	External thread G1/4
Pneumatic connection 2	Push-in sleeve Ø 10 mm
Note on materials	RoHS-compliant
Housing material	Brass, chemically nickel-plated
Material of threaded seal	FPM