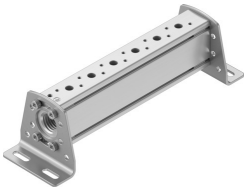


Common supply manifold VABM-B10-20-N38-6-P53

Part number: 576379



Data sheet

| Feature | Value |
|----------------------------------|-------------------------------|
| Width dimension | 22 mm |
| Mounting position | Any |
| Max. no. of valve positions | 6 |
| Corrosion resistance class (CRC) | 2 - Moderate corrosion stress |
| LABS (PWIS) conformity | VDMA24364-B1/B2-L |
| Product weight | 395 g |
| Type of mounting | With mounting bracket |
| Pneumatic connection 1 | 3/8 NPT |
| Note on materials | RoHS-compliant |
| Manifold rail material | Wrought aluminum alloy |