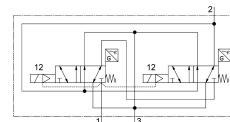
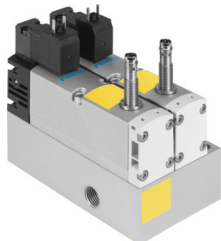


Control block VOFA-L26-T32C-M-G14-1C1-ANP

Part number: 574012

FESTO



Data sheet

Feature	Value
Valve function	3/2, closed, monostable
Actuation type	Electrical
Width	65 mm
Standard nominal flow rate	1050 l/min
Pneumatic working port	G1/4
Operating voltage	24V DC
Operating pressure	0.3 MPa...1 MPa 3 bar...10 bar 43.5 psi...145 psi
Structural design	Piston gate valve
Reset method	Mechanical spring
Degree of protection	IP65 NEMA 4
Certification	c UL us - Recognized (OL)
KC characters	KC EMC
CE marking (see declaration of conformity)	As per EU EMC directive as per EU machinery directive
UKCA marking (see declaration of conformity)	To UK instructions for EMC To UK instructions for machines
Certificate issuing authority	UL MH19482
Exhaust air function	With flow control option
Sealing principle	Soft
Mounting position	Any
Conforms to standard	EN 60947-5-2
Manual override	None
Type of control	Pilot-controlled
Pilot air supply port	Internal
Flow direction	Non-reversible
Measuring principle	Inductive
Lap	Overlap
Sensor reverse polarity protection	For all electrical connections
Safety function	Exhausting Tamper protection, protection against unexpected start-up

Feature	Value
Performance Level (PL)	Exhaust/up to category 4, performance level e Protection against manipulation, protection against unexpected start-up/up to category 4, performance level e
Note on forced dynamization	Switching frequency at least once a week
Signal status display	With accessories
Switching position sensing	Normal position with sensor
Sensor switching status indication	LED
Pilot pressure MPa	0.3 MPa...1 MPa
Pilot pressure	3 bar...10 bar
Suitability for vacuum	no
Standard flow rate exhaust 6-> 0 bar	2650 l/min
Standard flow rate exhaust 6 -> 0 bar in the event of a fault	1050 l/min
Switching time off	54 ms
On switching time	24 ms
Pneumatic valve - sensor ON switching time	58 ms
Pneumatic valve - sensor switching time off	11 ms
Duty cycle	100%
Max. positive test pulse with 0 signal	1000 µs
Max. negative test pulse on 1 signal	800 µs
Switching output	NPN
Coil characteristics	24 V DC: 1.8 W
Permissible voltage fluctuations	-15 % / +10 %
Operating medium	Compressed air as per ISO 8573-1:2010 [7:4:4]
Information on operating and pilot media	Operation with oil lubrication possible (required for further use)
Vibration resistance	Transport application test with severity level 2 as per FN 942017-4 and EN 60068-2-6
Shock resistance	Shock test with severity level 2 as per FN 942017-5 and EN 60068-2-27
Corrosion resistance class (CRC)	0 - No corrosion stress
LABS (PWIS) conformity	VDMA24364-B1/B2-L
Max. magnetic interference field	60 mT
Temperature of medium	-5 °C...50 °C
Noise level	85 dB(A)
Protection against direct and indirect contact	PELV Protection class as per EN 60950/IEC 950
Pilot medium	Compressed air as per ISO 8573-1:2010 [7:4:4]
Ambient temperature	-5 °C...50 °C
Nominal altitude of use above sea level	1000 m as per VDE 0580
Product weight	1134 g
DC sensor operating voltage range	10 V...30 V
Sensor short circuit protection	Pulsed
Sensor idle current	10 mA
Max. output current, sensor	200 mA
Sensor max. switching frequency	5000 Hz
Sensor residual ripple	± 10 %
Sensor voltage drop	2 V
Electrical connection	Form C as per EN 175301-803 Without PE conductor
Sensor connection	Plug 3-pin M8x1
Type of mounting	With through-hole
Pneumatic connection 1	G1/4
Pneumatic connection 2	G½
Pneumatic connection 3	G1/4

Feature	Value
Note on materials	RoHS-compliant
Seals material	FPM HNBR NBR
Housing material	Die-cast aluminum PA
Material of screws	Steel, galvanized
Switching element function	N/C contact