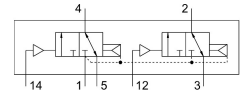


# Pneumatic valve VUWG-L14-T32C-A-G18

Part number: 573829

FESTO



## Data sheet

| Feature                                  | Value  |
|--|--|
| Valve function                           | 2x3/2, closed, monostable  |
| Actuation type                           | Pneumatic  |
| Valve size                               | 14 mm  |
| Standard nominal flow rate               | 650 l/min  |
| Pneumatic working port                   | G1/8   |
| Operating pressure                       | 1.5 bar...10 bar   |
| Structural design                        | Piston gate valve  |
| Reset method                             | Pneumatic spring   |
| Width dimension                          | 16 mm  |
| Exhaust air function                     | With flow control option   |
| Sealing principle                        | Soft   |
| Mounting position                        | Any  |
| Manual override                          | None   |
| Type of control                          | Direct   |
| Flow direction                           | Reversible with restrictions                                       |
| Lap                                      | Overlap  |
| Pilot pressure                           | 1.5 bar...10 bar   |
| Suitability for vacuum                   | no   |
| Switching time off                       | 19 ms  |
| On switching time                        | 6 ms   |
| Operating medium                         | Compressed air as per ISO 8573-1:2010 [7:4:4]                      |
| Information on operating and pilot media | Operation with oil lubrication possible (required for further use) |
| Corrosion resistance class (CRC)         | 2 - Moderate corrosion stress                                      |
| LABS (PWIS) conformity                   | VDMA24364-B1/B2-L  |
| Cleanroom class                          | Class 5 according to ISO 14644-1                                   |
| Temperature of medium                    | -5 °C...50 °C  |
| Pilot medium                             | Compressed air as per ISO 8573-1:2010 [7:4:4]                      |
| Ambient temperature                      | -5 °C...60 °C  |
| Product weight                           | 81 g   |
| Type of mounting                         | On PR rail<br>With through-hole<br>Optionally:                     |

| <b>Feature</b>         | <b>Value</b>         |
|------------------------|----------------------|
| Pilot air port 12      | M5                   |
| Pilot air port 14      | M5                   |
| Pneumatic connection 1 | G1/8                 |
| Pneumatic connection 2 | G1/8                 |
| Pneumatic connection 3 | G1/8                 |
| Pneumatic connection 4 | G1/8                 |
| Pneumatic connection 5 | G1/8                 |
| Note on materials      | RoHS-compliant       |
| Seals material         | HNBR<br>NBR          |
| Housing material       | Aluminum<br>Anodized |