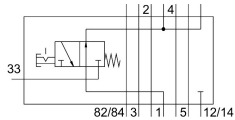
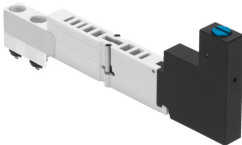


# Vertical pressure shut-off plate VMPA1-HS

Part number: 567805

**FESTO**



## Data sheet

Feature	Value
Width	10 mm
Mounting position	Any
Pneumatic vertical stacking	Shut-off for 1
Operating pressure	3 bar...8 bar
Standard nominal flow rate pressurization	103 l/min
Standard nominal flow rate exhaust air	213 l/min
Operating medium	Compressed air as per ISO 8573-1:2010 [7:4:4]
Information on operating and pilot media	Operation with oil lubrication possible (required for further use)
Corrosion resistance class (CRC)	2 - Moderate corrosion stress
LABS (PWIS) conformity	VDMA24364-B1/B2-L
Degree of protection	IP65
Ambient temperature	-5 °C...50 °C
Product weight	60 g
Vertical stacking mounting type	On manifold sub-base On individual sub-base
Note on materials	RoHS-compliant
Housing material	Wrought aluminum alloy PA-reinforced