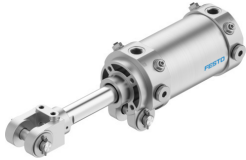


# Hinge cylinder DWA-63-75-Y-AB-G

Part number: 565768

**FESTO**



## Data sheet

| Feature                                  | Value   |
|--|---|
| Stroke                                   | 75 mm   |
| Piston diameter                          | 63 mm   |
| Piston rod thread                        | M16x1.5   |
| Wide rod clevis/swivel mounting          | 16 mm   |
| Cushioning                               | Pneumatic cushioning, adjustable at both ends   |
| Mounting position                        | Any   |
| Structural design                        | Piston<br>Piston rod with rod clevis<br>Swivel mounting on bearing cap<br>Cylinder barrel |
| Velocity control                         | Integrated flow control at both ends  |
| Position sensing                         | For proximity sensor  |
| Piston rod end                           | External thread with rod clevis   |
| Operating pressure                       | 1 bar...10 bar  |
| Mode of operation                        | Double-acting   |
| Operating medium                         | Compressed air as per ISO 8573-1:2010 [7:4:4]   |
| Information on operating and pilot media | Operation with oil lubrication possible (required for further use)                        |
| Corrosion resistance class (CRC)         | 0 - No corrosion stress   |
| LABS (PWIS) conformity                   | VDMA24364-B2-L  |
| Ambient temperature                      | -10 °C...60 °C  |
| Impact energy in the end positions       | 1.3 J   |
| Cushioning length                        | 20 mm   |
| Theoretical force at 6 bar, retracting   | 1682 N  |
| Theoretical force at 6 bar, advancing    | 1870 N  |
| Moving mass at 0 mm stroke               | 741 g   |
| Additional moving mass per 10 mm stroke  | 25 g  |
| Basic weight with 0 mm stroke            | 1600 g  |
| Additional weight per 10 mm stroke       | 42 g  |
| Alternative connections                  | See product drawing   |
| Type of mounting                         | With swivel mounting on bearing cap<br>With accessories                                   |
| Pneumatic connection                     | G1/4  |

| Feature                     | Value                                |
|-----------------------------|--------------------------------------|
| Rod clevis material         | Cast steel<br>Tempered steel         |
| Note on materials           | RoHS-compliant                       |
| Wiper material              | Bronze                               |
| Cover material              | Die-cast aluminum<br>Anodized        |
| Seals material              | NBR                                  |
| Piston rod material         | Tempered steel<br>Hard-chrome-plated |
| Material of cylinder barrel | Wrought aluminum alloy<br>Anodized   |