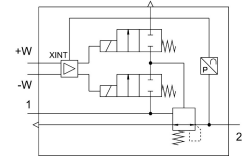
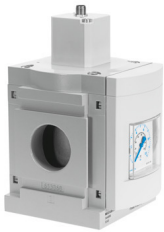


Pressure regulator MS12-LR-G-PE6

Part number: 564888

FESTO



Data sheet

Feature	Value
Size	12
Series	MS
Mounting position	Any
Structural design	Pilot-controlled diaphragm regulator
Controller function	Outlet pressure constant With primary pressure compensation With secondary exhausting With return flow function
Pressure gauge	with pressure gauge
Operating pressure	0.115 MPa...0.8 MPa 1.15 bar...8 bar
Pressure regulation range	0.15 bar...6 bar
Max. pressure hysteresis	0.004 MPa 0.04 bar 0.58 psi
Flow rate of secondary venting	600 l/min
Standard nominal flow rate	12000 l/min...21000 l/min
DC operating voltage range	21.6 V...26.4 V
Max. electrical power consumption	3.6 W
Max. current consumption	0.15 A
Nominal operating voltage DC	24 V
Residual ripple	10 %
Analog input signal range	0 - 10 V
KC characters	KC EMC
CE marking (see declaration of conformity)	As per EU EMC directive As per EU RoHS directive
UKCA marking (see declaration of conformity)	To UK instructions for EMC To UK RoHS instructions
Operating medium	Compressed air as per ISO 8573-1:2010 [7:4:4] Inert gas
Corrosion resistance class (CRC)	2 - Moderate corrosion stress
LABS (PWIS) conformity	VDMA24364-B1/B2-L
Storage temperature	-10 °C...60 °C
Temperature of medium	10 °C...50 °C

Feature	Value
Degree of protection	IP65
Ambient temperature	10 °C...50 °C
Product weight	4000 g
Type of mounting	Line installation With mounting bracket Optionally:
Pneumatic connection 1	Sub-base
Pneumatic connection 2	Sub-base
Covering material	PA
Note on materials	RoHS-compliant
Lower cover material	Wrought aluminum alloy
Seals material	NBR
Material of spring	Spring steel
Housing material	Die-cast aluminum
Diaphragm material	NBR
Valve tappet material	Wrought aluminum alloy NBR High-alloy stainless steel