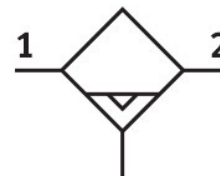


Water trap MS6-LWS-1/4-U-V

Part number: 564868

FESTO



Data sheet

| Feature | Value |
|----------------------------------|-----------------------------------------------------------|
| Size | 6 |
| Series | MS |
| Mounting position | Vertical +/- 5° |
| Condensate drain | Fully automatic |
| Structural design | Centrifugal separator |
| Max. condensate volume | 38 ml |
| Bowl guard | Integrated as metal bowl guard |
| Degree of condensate separation | 99 % |
| Operating pressure | 2 bar...12 bar |
| Standard nominal flow rate | 2400 l/min |
| Operating medium | Compressed air as per ISO 8573-1:2010 [7:::] Inert gas |
| Corrosion resistance class (CRC) | 2 - Moderate corrosion stress |
| LABS (PWIS) conformity | VDMA24364-B1/B2-L |
| For use in the food industry | See supplementary material information |
| Air quality class at the output | Compressed air as per ISO 8573-1:2010 [7:7:4] |
| Temperature of medium | -10 °C...60 °C |
| Ambient temperature | -10 °C...60 °C |
| Product weight | 820 g |
| Type of mounting | Line installation With accessories Optionally: |
| Pneumatic connection 1 | G1/4 |
| Pneumatic connection 2 | G1/4 |
| Note on materials | RoHS-compliant |
| Seals material | NBR |
| Housing material | Die-cast aluminum |
| Material of bowl | Wrought aluminum alloy |
| Inspection window material | PA |