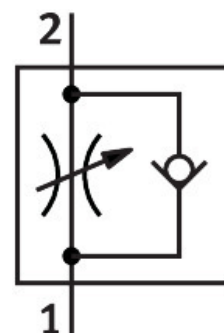


# One-way flow control valve GRLA-1/2-QB-3/8-U

Part number: 564846

**FESTO**



## Data sheet

Feature	Value
Valve function	Exhaust air flow control non-return function
Pneumatic connection 1	QB-3/8
Pneumatic connection 2	1/2 NPT
Actuation type	Manual
Adjusting element	Slotted screw
Type of mounting	Screw-in With external thread
Standard nominal flow rate in flow control direction	188 cfm
Standard nominal flow rate in non-return direction	145 cfm...192 cfm
Ambient temperature	32 °F...140 °F
Mounting position	Any
Operating pressure for entire temperature range	-13.8 psi...116 psi
Standard flow rate in flow control direction 6 -> 0 bar	268 cfm
Standard flow rate in non-return direction at 6 -> 0 bar	268 cfm...279 cfm
Operating medium	Compressed air as per ISO 8573-1:2010 [7:4:4]
Information on operating and pilot media	Operation with oil lubrication possible (required for further use)
LABS (PWIS) conformity	VDMA24364 zone III
Temperature of medium	32 °F...140 °F
Max. tightening torque	20.7 ft-lbf
Product weight	3.85 oz
Material of screwed plug	Brass Nickel-plated
Note on materials	RoHS-compliant
Seals material	NBR
Hollow bolt material	Brass Nickel-plated
Releasing ring material	POM

Feature	Value
Knurled head material	Brass Nickel-plated
Material of adjusting screw	Brass Nickel-plated
Swivel joint material	PBT-reinforced