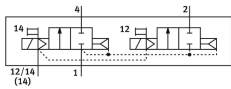
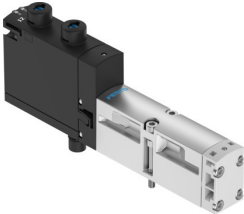


# Air solenoid valve

## VSVA-B-T22C-AZD-A2-1T1L

Part number: 561155



## Data sheet

Feature	Value
Valve function	2x2/2 closed, monostable
Actuation type	Electrical
Width	18 mm
Standard nominal flow rate	500 l/min
Pneumatic working port	Sub-base, size 18 mm as per ISO 15407-1 Connecting plate size 02 according to VDMA 24563 G1/8
Operating voltage	24V DC
Operating pressure	0.3 MPa...1 MPa 3 bar...10 bar
Structural design	Piston gate valve
Reset method	Pneumatic spring
Certification	c UL us - Recognized (OL)
Degree of protection	IP65 NEMA 4
Exhaust air function	With flow control option Via individual sub-base
Sealing principle	Soft
Mounting position	Any
Manual override	Detenting Non-detenting Covered
Type of control	Pilot-controlled
Pilot air supply port	External Internal
Flow direction	Non-reversible
Lap	Overlap
Signal status display	LED
Pilot pressure MPa	0.3 MPa...1 MPa
Pilot pressure	3 bar...10 bar
Flow rate of pneumatic valve	700 l/min
Flow rate of pneumatic valve on individual sub-base	500 l/min
Optimized flow rate of pneumatic valve, pneumatically concatenated flow	650 l/min

Feature	Value
Optimized flow rate of pneumatic valve pneumatically concatenated flow	500 l/min
Switching time off	30 ms
On switching time	12 ms
Duty cycle	100%
Max. positive test pulse with 0 signal	1700 µs
Max. negative test pulse on 1 signal	1200 µs
Max. current consumption	60 mA
Nominal operating voltage DC	24 V
Coil characteristics	24 V DC: 1.3 W
Surge resistance	2.5 kV
Contamination level	3
Permissible voltage fluctuations	+/- 10 %
Operating medium	Compressed air as per ISO 8573-1:2010 [7:4:4]
Information on operating and pilot media	Operation with oil lubrication possible (required for further use)
Vibration resistance	Transport application test with severity level 2 as per FN 942017-4 and EN 60068-2-6
Shock resistance	Shock test with severity level 2 as per FN 942017-5 and EN 60068-2-27
Corrosion resistance class (CRC)	0 - No corrosion stress
LABS (PWIS) conformity	VDMA24364-B1/B2-L
Relative air humidity	0 - 90 %
Pilot medium	Compressed air as per ISO 8573-1:2010 [7:4:4]
Ambient temperature	-5 °C...50 °C
Product weight	190 g
Electrical connection	Plug-in as per ISO 15407-2
Type of mounting	On sub-base
Pilot air port 12/14	Sub-base, size 18 mm as per ISO 15407-2
Pilot exhaust air port 82/84	Ducted Not ducted as per standard Optionally:
Pneumatic connection 1	Sub-base, size 18 mm as per ISO 15407-2
Pneumatic connection 2	Sub-base, size 18 mm as per ISO 15407-2
Pneumatic connection 3	Sub-base, size 18 mm as per ISO 15407-2
Pneumatic connection 4	Sub-base, size 18 mm as per ISO 15407-2
Pneumatic connection 5	Sub-base, size 18 mm as per ISO 15407-2
Note on materials	RoHS-compliant
Seals material	FPM HNBR NBR
Housing material	Die-cast aluminum PA
Material of screws	Steel, galvanized