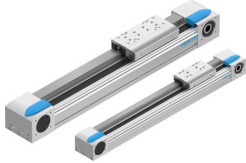


Belt driven linear actuator EGC-185- -TB-KF

Part number: 556817

FESTO



Data sheet

Feature	Value
Drive pinion effective diameter	73.85 mm
Working stroke	50 mm...8500 mm
Size	185
Toothed belt pitch	8 mm
Mounting position	Any
Guide	Recirculating ball bearing guide
Structural design	Electromechanical linear axis with toothed belt
Motor type	Stepper motor Servo motor
Measuring principle of linear potentiometer	Incremental
Max. acceleration	50 m/s ²
Max. speed	5 m/s
Repetition accuracy	±0.1 mm
Duty cycle	100%
LABS (PWIS) conformity	VDMA24364 zone III
Degree of protection	IP40
Ambient temperature	-10 °C...60 °C
2nd moment of area Iy	23400000 mm ⁴
2nd moment of area Iz	27400000 mm ⁴
Max. force Fy	15200 N
Max. force Fz	15200 N
Max. force Fy total axis	15200 N
Max. force Fz total axis	15200 N
Fy with theoretical service life of 100 km (from a guide perspective only)	55997 N
Fz with theoretical service life of 100 km (from a guide perspective only)	55997 N
Max. no-load resistance to shifting	110 N
Max. torque Mx	529 Nm
Max. torque My	1157 Nm...1820 Nm
Max. torque Mz	1157 Nm...1820 Nm
Max. moment Mx total axis	529 Nm
Max. moment My total axis	1157 Nm...1820 Nm

Feature	Value
Max. moment Mz total axis	1157 Nm...1820 Nm
Mx with theoretical service life of 100 km (from a guide perspective only)	1949 Nm
My with theoretical service life of 100 km (from a guide perspective only)	4262 Nm...6705 Nm
Mz with theoretical service life of 100 km (from a guide perspective only)	4262 Nm...6705 Nm
Max. feed force Fx	2500 N
Torsion moment of inertia It	14100000 mm ⁴
Mass moment of inertia JH per meter of stroke	7.6 kgcm ²
Mass moment of inertia JL per kg of payload	13.694 kgcm ²
Feed constant	232 mm/U
Reference service life	5000 km
Pneumatic port on clamping unit	M5
Material of end caps	Wrought aluminum alloy, anodized
Profile material	Wrought aluminum alloy, anodized
Note on materials	RoHS-compliant
Drive cover material	Wrought aluminum alloy, anodized
Slide carriage material	Steel
Guide rail material	Steel
Belt pulley material	High-alloy stainless steel
Slide material	Wrought aluminum alloy, anodized
Toothed belt clamping component material	Cast stainless steel
Toothed belt material	Polychloroprene with glass cord and nylon coating Polyurethane with steel cord and nylon cover