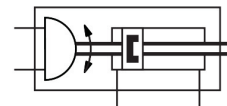
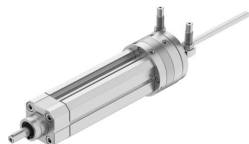


Swivel actuator unit DSL-20-40-270-CC-A-S20-B

Part number: 556436

FESTO



Data sheet

Feature	Value
Cushioning angle	12 deg
Adjustment range of swivel angle	0 deg...246 deg
Stroke	40 mm
Piston diameter	20 mm
Swivel angle	0 deg...246 deg
Cushioning	Pneumatic shock absorber at both ends Elastic cushioning rings/pads at both ends
Mounting position	Any
Precision adjustment	-3 deg
Mode of operation	Double-acting
Structural design	Rotary vane
Position sensing	For proximity sensor
Variants	Through, hollow piston rod
Protection against torsion/guide	With plain-bearing guide
Operating pressure	2.5 bar...8 bar
Max. impact velocity	500 mm/s
Max. swivel frequency at 6 bar	1 Hz
Swivel angle backlash	2 deg
Repetition accuracy	0.1 deg
Operating medium	Compressed air as per ISO 8573-1:2010 [7:4:4]
Information on operating and pilot media	Operation with oil lubrication possible (required for further use)
Corrosion resistance class (CRC)	1 - Low corrosion stress
LABS (PWIS) conformity	VDMA24364-B2-L
Ambient temperature	-10 °C...60 °C
Dynamic load torque	0.2 Nm
Theoretical force at 6 bar, retracting	120.5 N
Theoretical force at 6 bar, advancing	159 N
Theoretical torque at 6 bar	2.5 Nm
Permissible mass moment of inertia	0.0012 kgm ²
Product weight	1130 g
Basic weight with 0 mm stroke	1130 g
Additional weight per 10 mm stroke	52 g

Feature	Value
Type of mounting	Clamped in T slot With external thread Optionally:
Pneumatic connection	M5
Cover material	Wrought aluminum alloy Anodized
Seals material	TPE-U(PU)
Housing material	Wrought aluminum alloy Smooth anodized
Piston rod material	Tempered steel