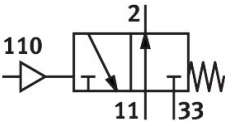
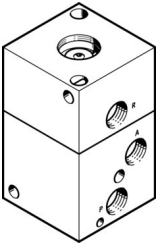


# Basic valve LOCB-3-1/4

Part number: 556345

**FESTO**



## Data sheet

Feature	Value
Valve function	3/2, open, monostable
Actuation type	Pneumatic
Width	50 mm
Standard nominal flow rate	600 l/min
Pneumatic working port	G1/4
Operating pressure	0.2 MPa...1 MPa 2 bar...10 bar
Structural design	Plate seat
Reset method	Mechanical spring
Nominal width	6.5 mm
Mounting position	Any
Pilot pressure MPa	0.1 MPa...1 MPa
Pilot pressure	1 bar...10 bar
Operating medium	Compressed air as per ISO 8573-1:2010 [7:4:4]
Information on operating and pilot media	Operation with oil lubrication possible (required for further use)
Corrosion resistance class (CRC)	2 - Moderate corrosion stress
LABS (PWIS) conformity	VDMA24364-B1/B2-L
Temperature of medium	-10 °C...60 °C
Ambient temperature	-10 °C...60 °C
Product weight	495 g
Type of mounting	With through-hole
Pilot air port 12	M20x1
Pneumatic connection 1	G1/4
Pneumatic connection 2	G3/4
Pneumatic connection 3	G1/4
Seals material	NBR
Housing material	Aluminum Anodized