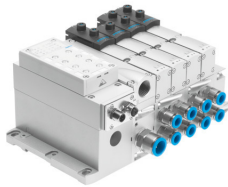


Valve manifold VTSA-ASI

Part number: 555564

FESTO



Data sheet

Feature	Value
Electrical actuation	Fieldbus
Electrical I/O system	yes
Valve terminal type	44
Operating medium	Compressed air as per ISO 8573-1:2010 [7:4:4]
Information on operating and pilot media	Operation with oil lubrication possible (required for further use)
Ambient temperature	-5 °C...50 °C
Storage temperature	-20 °C...60 °C
Relative air humidity	0 - 90 %
Degree of protection	IP65
Corrosion resistance class (CRC)	0 - No corrosion stress
Operating pressure	-0.09 MPa...1 MPa -0.9 bar...10 bar
Pilot pressure MPa	0.3 MPa...1 MPa
Pilot pressure	3 bar...10 bar
Operating pressure for valve manifold with internal pilot air supply	0.3 MPa...1 MPa 3 bar...10 bar 43.5 psi...145 psi
CE marking (see declaration of conformity)	As per EU EMC directive as per EU explosion protection directive (ATEX)
UKCA marking (see declaration of conformity)	To UK instructions for EMC To UK RoHS instructions
KC characters	KC EMC
Certification	BIA C-Tick c UL us - Recognized (OL)
Explosion prevention and protection	Zone 2 (ATEX)
ATEX category gas	II 3G
Type of ignition protection for gas	Ex nA IIC T3 X Gc
Explosive ambient temperature	-5°C ≤ Ta ≤ +50°C
Note on materials	RoHS-compliant
Valve manifold design	Modular, pneumatic valve sizes can be mixed
Actuation type	Electrical

Feature	Value
Valve function	2x2/2 closed, monostable 2x3/2, closed, monostable 2x3/2, open, monostable 2x3/2, open/closed, monostable 5/2, bistable 5/2, bistable, dominant 5/2, monostable 5/2, monostable, safety function 5/3, pressurized 5/3, exhausted 5/3, closed 5/3, connection 2 pressurized, 4 exhausted
Structural design	Piston gate valve
Valve size	18 mm 26 mm 42 mm 52 mm 65 mm
Pilot air supply port	External Internal
Max. standard nominal flow rate	550 l/min at 18 mm 1100 l/min at 26 mm 1300 l/min at 42 mm 2900 l/min at 52 mm 4000 l/min at 65 mm
Suitability for vacuum	yes
Exhaust air function	Via throttle plate
Pneumatic working port	G1/8 G1/4 G3/8 G1/2 G1 QS-6 QS-8 QS-10 QS-12 QS-16
Signal status display	LED
Nominal operating voltage DC	24 V
Permissible voltage fluctuations	+/- 10 %