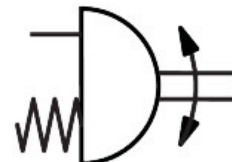


# Quarter turn actuator DAPS-0120-090-RS1-F0507-CR

Part number: 552887

**FESTO**



## Data sheet

Feature	Value
Size of valve actuator	0120
Flange hole pattern	F05 F07
Swivel angle	90 deg
Depth shaft connection	19.3 mm
Standard connection for valve	ISO 5211
Cushioning	No cushioning
Mounting position	Any
Mode of operation	Single-acting
Structural design	Scotch yoke system
Position sensing	None
Closing direction	Clockwise closing
Valve connection conforms to standard	VDI/VDE 3845 (NAMUR)
Safety integrity level (SIL)	Up to SIL 2 high demand mode Up to SIL 2 low demand mode
Connection pressure for spring force	0.28 MPa 2.8 bar
Operating pressure	0.28 MPa...0.84 MPa 2.8 bar...8.4 bar
Nominal operating pressure	0.56 MPa 5.6 bar
CE marking (see declaration of conformity)	as per EU explosion protection directive (ATEX)
UKCA marking (see declaration of conformity)	acc. to UK EX instructions
Explosion prevention and protection	Zone 1 (ATEX) Zone 2 (ATEX) Zone 21 (ATEX) Zone 22 (ATEX)
Certificate issuing authority	German Technical Control Board North (TÜV Nord) 212170801
ATEX category gas	II 2G
ATEX category for dust	II 2D
Type of ignition protection for gas	Ex h IIC T6...T3 Gb X
Type of (ignition) protection for dust	Ex h IIIC T85°C...T200°C Db X
Explosive ambient temperature	-20°C ≤ Ta ≤ +60°C
Operating medium	Compressed air as per ISO 8573-1:2010 [7:4:4]

Feature	Value
Information on operating and pilot media	Operation with oil lubrication possible (required for further use)
Corrosion resistance class (CRC)	3 - High corrosion stress
LABS (PWIS) conformity	VDMA24364-B1/B2-L
Ambient temperature	-20 °C...80 °C
Spring return torque at 0° swivel angle	40 Nm
Spring return torque with 50° swivel angle	30 Nm
Spring return torque with 90° swivel angle	60 Nm
Spring force	1
Air consumption at 6 bar per cycle 0°-nominal swivel angle-0°	4.9 l
Product weight	7600 g
Shaft connection	T17
Pneumatic connection	G1/8
Note on materials	RoHS-compliant
Cover material	High-alloy stainless steel
Material number of cover	1.4408
Seals material	FPM NBR PUR
Housing material	High-alloy stainless steel
Material number of housing	1.4408
Material of screws	High-alloy stainless steel
Shaft material	High-alloy stainless steel
Material number for shaft	1.4301