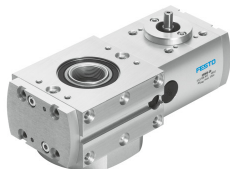


Rotary module ERMB-20

Part number: 552706

FESTO



Data sheet

Feature	Value
Size	20
Structural design	Electromechanical rotary module with toothed belt
Mounting position	Any
Rotation angle	Infinite
Gear ratio	4.5:1
Repetition accuracy	±0.03°
Position sensing	For inductive proximity sensors
Permissible mass moment of inertia	0.1 kgm ²
Product weight	850 g
Drive pinion diameter	6 mm
Toothed belt pitch	2 mm
Max. output speed	300 rpm
Max. input speed	1350 rpm
Max. output torque	3.15 Nm
Max. driving torque	0.7 Nm
No-load driving torque	0.07 Nm
Degree of protection	IP20
Noise level	32 dB(A)
Ambient temperature	-10 °C...60 °C
LABS (PWIS) conformity	VDMA24364 zone III
Note on materials	RoHS-compliant
Housing material	Wrought aluminum alloy Anodized
Material of drive shaft	Wrought aluminum alloy Anodized
Drive shaft material	High-alloy stainless steel
Cover material	Wrought aluminum alloy Anodized
Toothed belt material	Polychloroprene with glass fiber