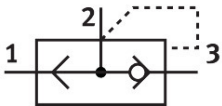
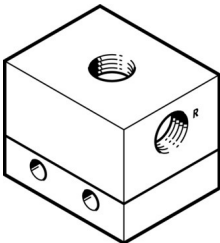


# Quick exhaust valve SE-1/4

Part number: 552431

FESTO



## Data sheet

Feature	Value
Valve function	Quick exhaust
Pneumatic connection 1	G1/4
Pneumatic connection 2	G1/4
Type of mounting	With through-hole
Standard nominal flow rate exhaust air 6->5 bar	1700 l/min
Standard nominal flow rate pressurization 6->5 bar	950 l/min
Operating pressure	0.5 bar...10 bar
Ambient temperature	-20 °C...75 °C
Housing material	Wrought aluminum alloy Anodized
Operating medium	Compressed air as per ISO 8573-1:2010 [7:::]
Nominal width	8 mm
Mounting position	Any
Information on operating and pilot media	Operation with oil lubrication possible (required for further use)
Corrosion resistance class (CRC)	2 - Moderate corrosion stress
LABS (PWIS) conformity	VDMA24364-B1/B2-L
Temperature of medium	-20 °C...75 °C
Product weight	250 g
Pneumatic connection 3	G1/4
Seals material	NBR