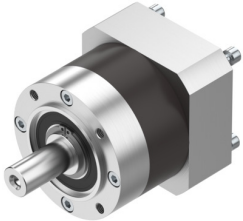


Gearbox EMGA-120-P-G3-SAS-100

Part number: 552196

FESTO



Data sheet

Feature	Value
Gearbox flange size	120 mm
Motor flange size	100 mm
Torsional backlash	0.12 deg
Gearbox type	Planetary gear
Gear ratio	3:1
Max. actuator speed	6500 rpm
Gearbox operating temperature	-25 °C...90 °C
LABS (PWIS) conformity	VDMA24364-B2-L
Degree of protection	IP54
Continuous output torque	115 Nm
Mass moment of inertia, gearbox	2.63 kgcm ²
Max. output torque	184 Nm
Max. efficiency	98 %
Torsional rigidity	12 Nm/arcmin
Product weight	6000 g
Gearbox interface, output shaft	120G
Gearbox interface, actuator	100A
Note on materials	RoHS-compliant