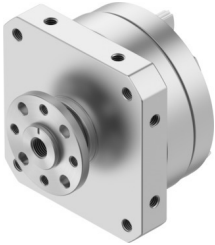


Rotary actuator DSM-25-270-P-FW-A-B

Part number: 547579

FESTO



Data sheet

| Feature | Value |
|------------------------------------|---|
| Size | 25 |
| Cushioning angle | 1.2 deg |
| Adjustment range of swivel angle | 0 deg...270 deg |
| Swivel angle | 0 deg...270 deg |
| Cushioning | Elastic cushioning rings/pads at both ends |
| Mounting position | Any |
| Precision adjustment | -6 deg |
| Mode of operation | Double-acting |
| Structural design | Rotary vane |
| Position sensing | For proximity sensor |
| Operating pressure | 0.15 MPa...1 MPa 1.5 bar...10 bar |
| Max. swivel frequency at 6 bar | 2 Hz |
| Operating medium | Compressed air as per ISO 8573-1:2010 [7:-:-] |
| Corrosion resistance class (CRC) | 0 - No corrosion stress |
| LABS (PWIS) conformity | VDMA24364-B1/B2-L |
| Cleanroom class | Class 6 according to ISO 14644-1 |
| Ambient temperature | -10 °C...60 °C |
| Max. axial force | 50 N |
| Max. radial force | 120 N |
| Theoretical torque at 6 bar | 5 Nm |
| Permissible mass moment of inertia | 0.015 kgm² |
| Product weight | 725 g |
| Type of mounting | With internal thread |
| Pneumatic connection | M5 |
| Note on materials | RoHS-compliant |
| Drive shaft material | Steel Nickel-plated |
| Seals material | TPE-U(PU) |
| Housing material | Wrought aluminum alloy |