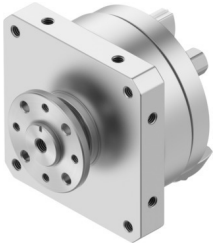


# Rotary actuator DSM-12-270-P-FW-A-B

Part number: 547571

**FESTO**



## Data sheet

Feature	Value
Size	12
Cushioning angle	1.8 deg
Adjustment range of swivel angle	0 deg...270 deg
Swivel angle	0 deg...270 deg
Cushioning	Elastic cushioning rings/pads at both ends
Mounting position	Any
Precision adjustment	-6 deg
Mode of operation	Double-acting
Structural design	Rotary vane
Position sensing	For proximity sensor
Operating pressure	0.2 MPa...1 MPa 2 bar...10 bar
Max. swivel frequency at 6 bar	2 Hz
Operating medium	Compressed air as per ISO 8573-1:2010 [7:-:-]
Corrosion resistance class (CRC)	0 - No corrosion stress
LABS (PWIS) conformity	VDMA24364-B1/B2-L
Cleanroom class	Class 6 according to ISO 14644-1
Ambient temperature	-10 °C...60 °C
Max. axial force	18 N
Max. radial force	45 N
Theoretical torque at 6 bar	1.25 Nm
Permissible mass moment of inertia	0.005 kgm²
Product weight	293 g
Type of mounting	With internal thread
Pneumatic connection	M5
Note on materials	RoHS-compliant
Drive shaft material	Steel Nickel-plated
Seals material	TPE-U(PU)
Housing material	Wrought aluminum alloy