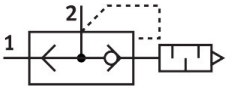


Quick exhaust valve VBQF-U-G18-Q6

Part number: 547532

FESTO



Data sheet

Feature	Value
Valve function	Quick exhaust
Selection of additional function	with muffler
Pneumatic connection 1	QS-6
Pneumatic connection 2	G1/8
Type of mounting	Screw-in
Standard flow rate exhaust 6-> 0 bar	1300 l/min
Standard nominal flow rate pressurization 6->5 bar	350 l/min
Operating pressure	0.5 bar...10 bar
Ambient temperature	-10 °C...60 °C
Housing material	Die-cast aluminum Die-cast zinc
Operating medium	Compressed air as per ISO 8573-1:2010 [7:4:4]
Nominal width	5 mm
Mounting position	Any
Information on operating and pilot media	Operation with oil lubrication possible (required for further use)
Corrosion resistance class (CRC)	1 - Low corrosion stress
LABS (PWIS) conformity	VDMA24364-B1/B2-L
Cleanroom class	Class 4 according to ISO 14644-1
Temperature of medium	-10 °C...60 °C
Noise level	75 dB(A)
Product weight	85.5 g
Note on materials	RoHS-compliant
Seals material	NBR