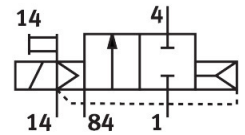


# Air solenoid valve CPVSC1-M1H-D-T-Q4C

Part number: 547 283

**FESTO**



## Data sheet

| Feature                                  | Value  |
|--|--|
| Valve function                           | 2/2, closed, monostable  |
| Actuation type                           | Electrical   |
| Valve size                               | 10 mm  |
| Standard nominal flow rate               | 150 l/min  |
| Pneumatic working port                   | QS-4   |
| Operating voltage                        | 24V DC   |
| Operating pressure                       | -0.09 MPa...0.7 MPa<br>-0.9 bar...7 bar  |
| Structural design                        | Piston gate valve  |
| Reset method                             | Pneumatic spring   |
| Degree of protection                     | IP40   |
| Exhaust air function                     | Without flow control option  |
| Sealing principle                        | Soft   |
| Mounting position                        | Any  |
| Manual override                          | Detenting<br>Non-detenting   |
| Type of control                          | Pilot-controlled   |
| Pilot air supply port                    | External   |
| Flow direction                           | Non-reversible   |
| Lap                                      | Overlap  |
| Pilot pressure MPa                       | 0.3 MPa...0.7 MPa  |
| Pilot pressure                           | 3 bar...7 bar  |
| Switching time off                       | 10 ms  |
| On switching time                        | 10 ms  |
| Max. positive test pulse with 0 signal   | 500 µs   |
| Max. negative test pulse on 1 signal     | 400 µs   |
| Coil characteristics                     | 24 V DC: 1.0 W   |
| Operating medium                         | Compressed air as per ISO 8573-1:2010 [7:4:4]  |
| Information on operating and pilot media | Operation with oil lubrication possible (required for further use)                   |
| Vibration resistance                     | Transport application test with severity level 2 as per FN 942017-4 and EN 60068-2-6 |
| Shock resistance                         | Shock test with severity level 2 as per FN 942017-5 and EN 60068-2-27                |

| Feature                          | Value                    |
|----------------------------------|--------------------------|
| Corrosion resistance class (CRC) | 1 - Low corrosion stress |
| LABS (PWIS) conformity           | VDMA24364-B2-L           |
| Temperature of medium            | -5 °C...50 °C            |
| Ambient temperature              | -5 °C...50 °C            |
| Product weight                   | 30.5 g                   |
| Electrical connection            | 2-pin<br>Plug            |
| Type of mounting                 | With through-hole        |
| Pilot exhaust air port 82/84     | Common port              |
| Pneumatic connection 1           | Common port              |
| Pneumatic connection 2           | QS-4                     |
| Pneumatic port 3/5 combined      | Common port              |
| Pneumatic connection 4           | QS-4                     |
| Note on materials                | RoHS-compliant           |
| Seals material                   | NBR                      |
| Housing material                 | Die-cast aluminum        |