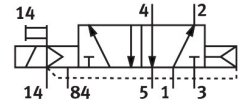


Air solenoid valve CPVSC1-M1H-M-T-Q3

Part number: 547 281

FESTO



Data sheet

Feature	Value
Valve function	5/2, monostable
Actuation type	Electrical
Valve size	10 mm
Standard nominal flow rate	170 l/min
Pneumatic working port	QS-3
Operating voltage	24V DC
Operating pressure	-0.09 MPa...0.7 MPa -0.9 bar...7 bar
Structural design	Piston gate valve
Reset method	Pneumatic spring
Degree of protection	IP40
Exhaust air function	Without flow control option
Sealing principle	Soft
Mounting position	Any
Manual override	Detenting Non-detenting
Type of control	Pilot-controlled
Pilot air supply port	External
Flow direction	Non-reversible
Lap	Overlap
Pilot pressure MPa	0.3 MPa...0.7 MPa
Pilot pressure	3 bar...7 bar
Switching time off	10 ms
On switching time	10 ms
Max. positive test pulse with 0 signal	500 µs
Max. negative test pulse on 1 signal	400 µs
Coil characteristics	24 V DC: 1.0 W
Operating medium	Compressed air as per ISO 8573-1:2010 [7:4:4]
Information on operating and pilot media	Operation with oil lubrication possible (required for further use)
Vibration resistance	Transport application test with severity level 2 as per FN 942017-4 and EN 60068-2-6
Shock resistance	Shock test with severity level 2 as per FN 942017-5 and EN 60068-2-27

Feature	Value
Corrosion resistance class (CRC)	1 - Low corrosion stress
LABS (PWIS) conformity	VDMA24364-B2-L
Temperature of medium	-5 °C...50 °C
Ambient temperature	-5 °C...50 °C
Product weight	30.5 g
Electrical connection	2-pin Plug
Type of mounting	With through-hole
Pilot exhaust air port 82/84	Common port
Pneumatic connection 1	Common port
Pneumatic connection 2	QS-3
Pneumatic port 3/5 combined	Common port
Pneumatic connection 4	QS-3
Note on materials	RoHS-compliant
Seals material	NBR
Housing material	Die-cast aluminum