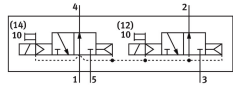
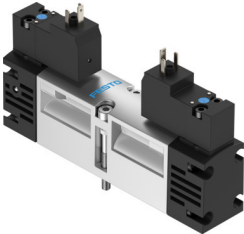


# Air solenoid valve VSVA-B-T32U-AH-A1-3AC1

Part number: 547 210

**FESTO**



## Data sheet

Feature	Value
Valve function	2x3/2, open, monostable
Actuation type	Electrical
Valve size	26 mm
Standard nominal flow rate	900 l/min
Pneumatic working port	Sub-base, size 26 mm according to ISO 15407-1 Connecting plate size 01 according to VDMA 24563 G1/4
Operating voltage	230V AC
Operating pressure	0.2 MPa...1 MPa 2 bar...10 bar
Structural design	Piston gate valve
Reset method	Pneumatic spring
CE marking (see declaration of conformity)	As per EU low voltage directive
UKCA marking (see declaration of conformity)	To UK instructions for EMC
Degree of protection	IP65 NEMA 4
Nominal width	9 mm
Exhaust air function	With flow control option
Sealing principle	Soft
Mounting position	Any
Conforms to standard	ISO 15407-1 VDMA 24563
Manual override	Non-detenting
Type of control	Pilot-controlled
Pilot air supply port	Internal
Flow direction	Non-reversible
Lap	Overlap
Signal status display	LED
Pilot pressure MPa	0.3 MPa...1 MPa
Pilot pressure	3 bar...10 bar
Flow rate of pneumatic valve	1250 l/min
Flow rate of pneumatic valve on individual sub-base	1000 l/min
Optimized flow rate of pneumatic valve pneumatically concatenated flow	900 l/min

Feature	Value
Switching time off	28 ms
On switching time	20 ms
Duty cycle	100%
Coil characteristics	230 V AC: 50/60 Hz, initial power 2.9 VA, holding power 2.1 VA
Permissible voltage fluctuations	-15 % / +10 %
Operating medium	Compressed air as per ISO 8573-1:2010 [7:4:4]
Information on operating and pilot media	Operation with oil lubrication possible (required for further use)
Vibration resistance	Transport application test with severity level 2 as per FN 942017-4 and EN 60068-2-6
Shock resistance	Shock test with severity level 2 as per FN 942017-5 and EN 60068-2-27
Corrosion resistance class (CRC)	0 - No corrosion stress
LABS (PWIS) conformity	VDMA24364-B1/B2-L
Temperature of medium	-5 °C...50 °C
Relative air humidity	0 - 90 %
Noise level	85 dB(A)
Pilot medium	Compressed air as per ISO 8573-1:2010 [7:4:4]
Ambient temperature	-5 °C...50 °C
Max. tightening torque for valve mounting	2 Nm
Product weight	305 g
Electrical connection	Form C With PE conductor as per DIN EN 175301-803
Type of mounting	On sub-base
Auxiliary pilot air port 12	Sub-base, size 26 mm as per ISO 15407-1
Auxiliary pilot air port 14	Sub-base, size 26 mm as per ISO 15407-1
Pilot exhaust air port 82/84	Ducted Not ducted as per standard
Pneumatic connection 1	Sub-base, size 26 mm as per ISO 15407-1
Pneumatic connection 2	Sub-base, size 26 mm as per ISO 15407-1
Pneumatic connection 3	Sub-base, size 26 mm as per ISO 15407-1
Pneumatic connection 4	Sub-base, size 26 mm as per ISO 15407-1
Pneumatic connection 5	Sub-base, size 26 mm as per ISO 15407-1
Pilot interface	as per ISO 15218
Note on materials	RoHS-compliant
Seals material	HNBR NBR
Housing material	Die-cast aluminum
Material of screws	Steel Galvanized