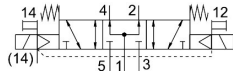
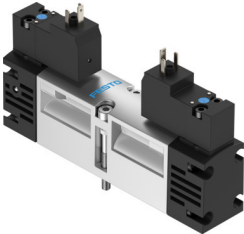


# Air solenoid valve VSVA-B-P53U-ZH-A1-2AC1

Part number: 547 202

**FESTO**



## Data sheet

| Feature  | Value   |
|--|---|
| Valve function   | 5/3, pressurized  |
| Actuation type   | Electrical  |
| Valve size   | 26 mm   |
| Standard nominal flow rate   | 1000 l/min  |
| Pneumatic working port   | Sub-base, size 26 mm according to ISO 15407-1<br>Connecting plate size 01 according to VDMA 24563<br>G1/4 |
| Operating voltage  | 110V AC   |
| Operating pressure   | -0.09 MPa...1.6 MPa<br>-0.9 bar...16 bar  |
| Structural design  | Piston gate valve   |
| Reset method   | Mechanical spring   |
| CE marking (see declaration of conformity)                             | As per EU low voltage directive   |
| UKCA marking (see declaration of conformity)                           | To UK instructions for EMC  |
| Degree of protection   | IP65<br>NEMA 4  |
| Nominal width  | 9 mm  |
| Exhaust air function   | With flow control option  |
| Sealing principle  | Soft  |
| Mounting position  | Any   |
| Conforms to standard   | ISO 15407-1<br>VDMA 24563   |
| Manual override  | Non-detenting   |
| Type of control  | Pilot-controlled  |
| Pilot air supply port  | External  |
| Flow direction   | Reversible  |
| Lap  | Overlap   |
| Signal status display  | LED   |
| Pilot pressure MPa   | 0.3 MPa...1 MPa   |
| Pilot pressure   | 3 bar...10 bar  |
| Flow rate of pneumatic valve   | 1400 l/min  |
| Flow rate of pneumatic valve on individual sub-base                    | 1100 l/min  |
| Optimized flow rate of pneumatic valve pneumatically concatenated flow | 1000 l/min  |

| Feature                                   | Value  |
|---|--|
| Switching time off                        | 58 ms  |
| On switching time                         | 23 ms  |
| Changeover time                           | 35 ms  |
| Duty cycle                                | 100%   |
| Coil characteristics                      | 110 V AC: 50/60 Hz, initial power 2.9 VA, holding power 2.1 VA                       |
| Permissible voltage fluctuations          | -15 % / +10 %  |
| Operating medium                          | Compressed air as per ISO 8573-1:2010 [7:4:4]  |
| Information on operating and pilot media  | Operation with oil lubrication possible (required for further use)                   |
| Vibration resistance                      | Transport application test with severity level 2 as per FN 942017-4 and EN 60068-2-6 |
| Shock resistance                          | Shock test with severity level 2 as per FN 942017-5 and EN 60068-2-27                |
| Corrosion resistance class (CRC)          | 0 - No corrosion stress  |
| LABS (PWIS) conformity                    | VDMA24364-B1/B2-L  |
| Temperature of medium                     | -5 °C...50 °C  |
| Relative air humidity                     | 0 - 90 %   |
| Noise level                               | 85 dB(A)   |
| Pilot medium                              | Compressed air as per ISO 8573-1:2010 [7:4:4]  |
| Ambient temperature                       | -5 °C...50 °C  |
| Max. tightening torque for valve mounting | 2 Nm   |
| Product weight                            | 305 g  |
| Electrical connection                     | Form C<br>With PE conductor<br>as per DIN EN 175301-803                              |
| Type of mounting                          | On sub-base  |
| Auxiliary pilot air port 12               | Sub-base, size 26 mm as per ISO 15407-1  |
| Auxiliary pilot air port 14               | Sub-base, size 26 mm as per ISO 15407-1  |
| Pilot exhaust air port 82/84              | Ducted<br>Not ducted<br>Optionally:  |
| Pneumatic connection 1                    | Sub-base, size 26 mm as per ISO 15407-1  |
| Pneumatic connection 2                    | Sub-base, size 26 mm as per ISO 15407-1  |
| Pneumatic connection 3                    | Sub-base, size 26 mm as per ISO 15407-1  |
| Pneumatic connection 4                    | Sub-base, size 26 mm as per ISO 15407-1  |
| Pneumatic connection 5                    | Sub-base, size 26 mm as per ISO 15407-1  |
| Pilot interface                           | as per ISO 15218   |
| Note on materials                         | RoHS-compliant   |
| Seals material                            | NBR  |
| Housing material                          | Die-cast aluminum  |
| Material of screws                        | Steel<br>Galvanized  |