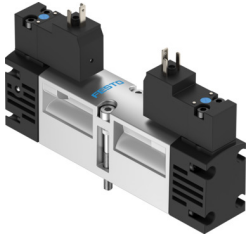


# Air solenoid valve VSVA

Part number: 546691

**FESTO**



## Data sheet

Feature	Value
Valve function	2x2/2 closed, monostable 2x3/2, closed, monostable 2x3/2, open, monostable 2x3/2, open/closed, monostable 5/2, bistable 5/2, bistable, dominant 5/2, monostable 5/3, pressurized 5/3, exhausted 5/3, closed
Actuation type	Electrical
Valve size	18 mm 26 mm
Standard nominal flow rate	400 l/min...1400 l/min
Pneumatic working port	Sub-base, size 18 mm as per ISO 15407-1 Sub-base, size 26 mm according to ISO 15407-1 Connecting plate size 01 according to VDMA 24563 Connecting plate size 02 according to VDMA 24563 G1/8 G1/4
Operating voltage	110V AC 12V DC 230V AC 24V AC 24V DC
Operating pressure	-0.09 MPa...1.6 MPa -0.9 bar...16 bar
Structural design	Piston gate valve
Reset method	Mechanical spring Pneumatic spring
CE marking (see declaration of conformity)	As per EU low voltage directive
UKCA marking (see declaration of conformity)	To UK instructions for electrical equipment
Degree of protection	IP65 NEMA 4
Exhaust air function	With flow control option
Sealing principle	Soft
Mounting position	Any

Feature	Value
Conforms to standard	ISO 15407-1 VDMA 24563
Type of control	Pilot-controlled
Lap	Overlap
Signal status display	LED
Pilot pressure MPa	0.3 MPa...1 MPa
Pilot pressure	3 bar...10 bar
Duty cycle	100%
Permissible voltage fluctuations	-15 % / +10 %
Operating medium	Compressed air as per ISO 8573-1:2010 [7:4:4]
Information on operating and pilot media	Operation with oil lubrication possible (required for further use)
Corrosion resistance class (CRC)	0 - No corrosion stress
LABS (PWIS) conformity	VDMA24364-B1/B2-L
Temperature of medium	-5 °C...50 °C
Relative air humidity	0 - 90 %
Noise level	85 dB(A)
Pilot medium	Compressed air as per ISO 8573-1:2010 [7:4:4]
Ambient temperature	-5 °C...50 °C
Type of mounting	On sub-base
Pilot exhaust air port 82/84	Ducted Not ducted as per standard
Pilot interface	as per ISO 15218
Note on materials	RoHS-compliant
Seals material	HNBR NBR
Housing material	Die-cast aluminum
Material of screws	Steel Galvanized