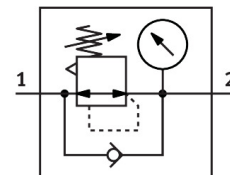
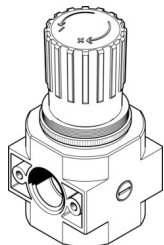


# Basic valve LR-D-7-MAXI

Part number: 546465

**FESTO**



## Data sheet

Feature	Value
Size	Maxi
Series	D
Actuator lock	Rotary knob with detent
Mounting position	Any
Structural design	Pilot-controlled piston control valve
Controller function	Outlet pressure constant With secondary exhausting
Pressure gauge	G1/4 prepared
Operating pressure	0 MPa...1.6 MPa 0 bar...16 bar
Pressure regulation range	0.5 bar...7 bar
Max. pressure hysteresis	0.04 MPa 0.4 bar 5.8 psi
Standard nominal flow rate	1681 cfm
Operating medium	Compressed air as per ISO 8573-1:2010 [7:4:4] Inert gas
Information on operating and pilot media	Operation with oil lubrication possible (required for further use)
Corrosion resistance class (CRC)	2 - Moderate corrosion stress
LABS (PWIS) conformity	VDMA24364-B1/B2-L
Air quality class at the output	Compressed air as per ISO 8573-1:2010 [7:4:4] Inert gas
Temperature of medium	14 °F...140 °F
Ambient temperature	14 °F...140 °F
Product weight	38.5 oz
Type of mounting	Front panel mounting Line installation With accessories
Note on materials	RoHS-compliant
Seals material	NBR
Housing material	Die-cast zinc