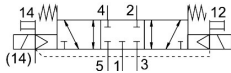


# Air solenoid valve VSVA-B-P53C-ZD-D1-1T1L

Part number: 543702

**FESTO**



## Data sheet

Feature	Value
Valve function	5/3, closed
Actuation type	Electrical
Width	42 mm
Standard nominal flow rate	1200 l/min
Pneumatic working port	Sub-base, size 1 as per ISO 5599-2 G3/8
Operating voltage	24V DC
Operating pressure	-0.09 MPa...1 MPa -0.9 bar...10 bar
Structural design	Piston gate valve
Certification	c UL us - Recognized (OL)
Degree of protection	IP65 NEMA 4
Exhaust air function	With flow control option Via throttle plate Via individual sub-base
Sealing principle	Soft
Mounting position	Any
Manual override	Detenting Non-detenting Covered
Type of control	Pilot-controlled
Pilot air supply port	External
Flow direction	Any
Signal status display	LED
Pilot pressure MPa	0.3 MPa...1 MPa
Pilot pressure	3 bar...10 bar
Flow rate of pneumatic valve	1700 l/min
Flow rate of pneumatic valve on individual sub-base	1400 l/min
Optimized flow rate of pneumatic valve, pneumatically concatenated flow	1690 l/min
Optimized flow rate of pneumatic valve pneumatically concatenated flow	1200 l/min
Switching time off	65 ms
On switching time	22 ms

Feature	Value
Max. positive test pulse with 0 signal	1400 µs
Max. negative test pulse on 1 signal	900 µs
Nominal pick-up current per solenoid coil	72 mA to 30 ms
Coil characteristics	24 V DC: 1.6 W
Surge resistance	2.5 kV
Contamination level	3
Permissible voltage fluctuations	+/- 10 %
Operating medium	Compressed air as per ISO 8573-1:2010 [7:4:4]
Information on operating and pilot media	Operation with oil lubrication possible (required for further use)
Vibration resistance	Transport application test with severity level 2 as per FN 942017-4 and EN 60068-2-6
Shock resistance	Shock test with severity level 2 as per FN 942017-5 and EN 60068-2-27
Corrosion resistance class (CRC)	0 - No corrosion stress
LABS (PWIS) conformity	VDMA24364-B1/B2-L
Relative air humidity	0 - 90 %
Ambient temperature	-5 °C...50 °C
Product weight	456 g
Electrical connection	Plug-in as per ISO 5599-2
Type of mounting	On sub-base
Pilot air port 12/14	Sub-base, size 1 as per ISO 5599-2
Pilot exhaust air port 82/84	Ducted Not ducted as per standard Optionally:
Pneumatic connection 1	Sub-base, size 1 as per ISO 5599-2
Pneumatic connection 2	Sub-base, size 1 as per ISO 5599-2
Pneumatic connection 3	Sub-base, size 1 as per ISO 5599-2
Pneumatic connection 4	Sub-base, size 1 as per ISO 5599-2
Pneumatic connection 5	Sub-base, size 1 as per ISO 5599-2
Note on materials	RoHS-compliant
Seals material	FPM HNBR NBR
Housing material	Die-cast aluminum PA
Material of screws	Steel, galvanized